

FALL/WINTER 2013

 **IMSA**

360

An Evolution of **STEM Education**

News for Alumni and Friends of the
Illinois Mathematics and Science Academy®
2013 IMSA Fund Annual Report



Online Learning – IMSA
is Always Changing

APA Studies Impact of IMSA,
Specialized STEM Education

CoolHub Poised to Expand
with New Partnerships

IMSA Board of Trustees**OFFICERS**

Chairman, Sheila MB Griffin
Executive VP, Griffin Holdings, Inc.

First Vice Chairman, Dr. Paula Olszewski-Kubilius
Director, Center for Talent Development, Northwestern University

Second Vice Chairman, Dr. Erin W. Roche '89
Principal, Prescott Magnet Charter School

Secretary (Non-Voting), Britta McKenna
Chief Innovation Officer, Illinois Mathematics and Science Academy

Treasurer (Non-Voting), Patrick Furlong
VP for Business and Finance/CFO, Illinois Mathematics and Science Academy

TRUSTEES

Eric R. Brown, M.S. Ed
Biology Teacher, Evanston Township High School #202

Dr. Jerome "Jay" Budzik '95
Chief Technology Officer, Twelffold Media

Kathy He
Chief Executive Officer, Vivregen LLC

Dr. Steven T. Isoye
Superintendent, Oak Park and River Forest High School District 200

Leslie N. Juby
Substitute Teacher, Batavia, IL Public Schools

Dr. Mary Kalantzis
Dean, College of Education, University of Illinois at Urbana-Champaign

Carey Steger Mayer '90
Architectural Group Leader, Dewberry Architects

Dr. Luis Núñez
Consultant, BioTarget

Dr. Marsha R. Rosner
Charles B. Huggins Professor, Ben May Department for Cancer Research, The University of Chicago

EX-OFFICIO BOARD MEMBERS

Dr. Karen Hunter Anderson, *Executive Director, Illinois Community College Board*

Dr. Harry Berman, *Executive Director, Illinois Board of Higher Education*

Dr. Christopher Koch, *State Superintendent, Illinois State Board of Education*

Dr. James Rydland, *Superintendent, West Aurora School District 129*

President

Catherine C. Veal

The mission of IMSA, the world's leading teaching and learning laboratory for imagination and inquiry, is to ignite and nurture creative, ethical, scientific minds that advance the human condition, through a system distinguished by profound questions, collaborative relationships, personalized experiential learning, global networking, generative use of technology and pioneering outreach.

Changing Ground

One of the best things about IMSA that never changes is that we continue to change, not "change for change's sake," but change to keep learning, leading and innovating, change grounded in who we are and who we aspire to be. One area of big change on the horizon relates to upgrading our facilities.



Catherine C. Veal
IMSA President

For some time now, we have coped with an aging campus, an academic building much of which has not been renovated since the 1970s (before IMSA opened and occupied the then-closed facility), and residence halls in serious need of major rehabilitation. Thankfully, the State of Illinois has now made available approximately \$10 million to renovate the exterior of our residence halls and fix our leaking roof.

Additionally, we have breaking news to share! Funding to renovate our antiquated upstairs science labs has made it through the pipeline and \$3.6 million has been released by the State of Illinois. More details are forthcoming about this public-private partnership. Also, \$50,000 will be invested this year to upgrade our wireless and wired capacity on campus, thanks to donations by alumni, parents and friends.

And with great excitement and anticipation, we can now announce a major gift from an alumnus to create an "Innovation Center" on campus, modeled in part after Chicago's bustling 1871 co-working center for digital startups. The design and resources of this incubator space, an approximately 6,000 sq. ft. \$2 million project, will immerse and support IMSA students and alumni, other Illinois students who participate in IMSA TALENT (Total Applied Learning for ENTrepreneurs) and local entrepreneurs in the life and work of startups. More on this in our spring issue of IMSA360.

Other capital projects will be identified in a comprehensive facility master plan, to be developed this year with donor funds, and then we will reach out to alumni, parents, board members, friends, corporations and foundations and ask you to supplement the State's significant capital investments. These plans will develop soon.

As we carry the best of IMSA past and present forward, with a strengthened public-private partnership, we will see and feel physical changes befitting a state agency that also aspires to be the world's leading teaching and learning laboratory for imagination and inquiry. It is an exciting time. Yet another time to be proud.

Thank you for helping us create and live into our desired future. **360**

**IMSA Fund for Advancement of Education
Directors**

OFFICERS

President, John Hoesley '89
Managing Director, Silicon Valley Bank

Vice President, Pamela Blackwell
CEO, Blackwell Management Solutions
VP, Blackwell Global Consulting

Treasurer, Michael Suh '97
Portfolio Manager, The University of Chicago,
Office of Investments

Secretary (Non-Voting), Paul Milano
Executive Director of Development,
Illinois Mathematics and Science Academy

BOARD OF DIRECTORS

Ross Hemphill, Ph.D.
VP, Regulatory Policy & Strategy, ComEd

Vasu Kulkarni, Ph.D., M.B.A.
Director of Marketing and Business Development,
BP Americas Inc.

Stephanie Pace Marshall, Ph.D.
Founding President and President Emerita,
Illinois Mathematics and Science Academy

Glenn W. "Max" McGee, Ph.D.
Head of School, Princeton International
School of Mathematics and Science

Dan Mueh '90
Program Director, Haemonetics Corporation

Joseph Nolan
Chief Commercial Officer, Lundbeck, Inc.

Jacob Plummer '96
VP, Business Development, Allscripts

Glenn Rippie, J.D.
Partner & Chief Financial Officer, Rooney Rippie
& Ratnaswamy LLP

EX-OFFICIO DIRECTORS (Non-Voting)

JuliAnn Geldner, J.D., Liaison to IMSA Parent Association
Council, *IMSA Parent Association Council President*,
2013-2014, *Legal Counsel/Practice Administrator*,
The Geldner Center

Melissa Comenduley '90, Liaison to IMSA Alumni
Association, *IMSA Alumni Association Treasurer*,
Broadway Technology LLC

Luis Núñez, Liaison to IMSA Board of Trustees,
IMSA Board of Trustees, Consultant, BioTarget

Executive Editor

Christina Kaucnik

Managing Editor

Mike Abrahamson

Contributing Writers

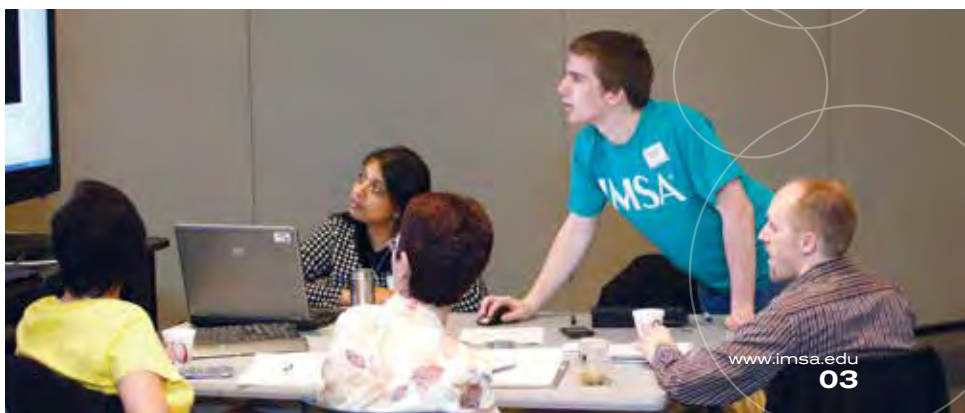
Mike Abrahamson, Melvin Bacani, John Hoesley '90,
Carolyn Johnson, Christina Kaucnik, Paul Milano,
Catherine C. Veal

Photography

Courtesy of IMSA/Chris Reader (unless otherwise noted)

IMSA360 is published by the IMSA Office of Marketing and
Communications and sent free to alumni and friends of the
Illinois Mathematics and Science Academy.

Send comments, questions or story ideas to:
Mike Abrahamson, mabrahamson@imsa.edu



APA Study Leads the Way

in Understanding Impact of IMSA, Specialized STEM Education

Part of IMSA's work is to "advance education through research," shedding light on STEM education by analyzing its own methods and results. IMSA did just that by taking a leading role in a groundbreaking research study, which examines the intermediate-term outcomes of STEM specialty schools for talented learners. The study, funded by the National Science Foundation (NSF) and conducted by the American Psychological Association (APA) and the University of Virginia, produced some results that affirm IMSA's ability to incubate students' interest in STEM, as well as some results that elucidate follow-up questions that will help reveal the impact of the Academy, and in doing so, progress it.

IMSA played a crucial role in the APA study, which released its initial results in July. Trustee Paula Olszewski-Kubilius and Director of Institutional Research and Effectiveness Christopher Kolar served on the research committee, helping to design, develop, and pilot the instruments of the study. IMSA's classes of 2004-2007 were surveyed as part of the study, which included over 3,500 graduates of 25 specialized STEM schools and over 1,100 participants in talent development programs at Northwestern and Johns Hopkins Universities.

One of the fundamental findings was that interest in STEM largely starts before IMSA's residential academy does; most participants were attracted to STEM in elementary school. The percent of students that graduated with STEM degrees was more than twice the national average in nearly every selective program in the study, which reflects this early interest. "Students show up at high schools and talent search programs with early interest," noted John Almarode, a principal investigator of the study. The study then asked, what do specialized public high schools of science, mathematics, and technology (SMT) like IMSA do for students?

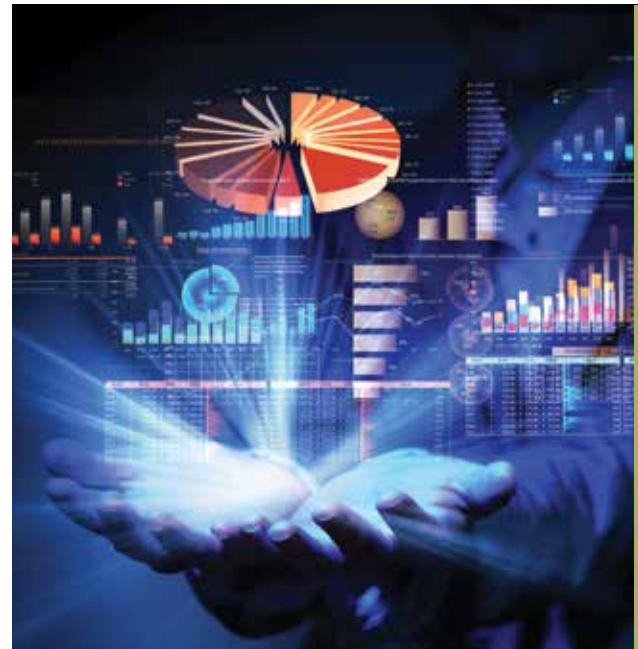
The study found that SMT schools, and IMSA in particular, intensified the interest of students who already have a proclivity for STEM. "Early interest alone is not enough. We have to take that interest and do something with it," continued Almarode. "We can either do things that help them maintain their interest and we only see a 64% bump [in STEM graduates over the national average], or we can create an environment like at IMSA... that actually causes their interest to intensify, and in that event we see a major, major influence not only to stay in the pipeline, but to go on to earn a degree in a STEM area."

An environment like at IMSA... actually causes [STEM] interest to intensify, and in that event we see a major, major influence not only to stay in the pipeline, but to go on to earn a degree in a STEM area."

— John Almarode, Principal Investigator for APA Study

The study showed that SMT students who felt their interest in STEM intensify while in high school were five times more likely to graduate from college with a STEM related major.

The IMSA specific data affirm the conclusion that the Academy intensifies interest in STEM. About 60% of IMSA graduates in the four participating classes earned STEM degrees as undergraduates, compared to about 50% of all specialized SMT high schools studied and a 22.6% national average reported by the National Science Foundation. Females, an underrepresented group in STEM education, also fared well at IMSA: 53% attained STEM degrees, as opposed to 46% of study participants.



Perhaps the most important results of this study for the future of IMSA deal with how IMSA intensifies STEM for those IMSA graduates that reported intensification, as these factors correspond to students being 2.5 times more likely to attain a STEM degree. The study looked at 16 possible factors for intensifying interest, and three of them applied to IMSA. Most significant among these for IMSA was faculty reinforcement of STEM learning. "When intensification of interest in STEM happens at IMSA, it is primarily due to faculty engagement with the students and reinforcement of their interests," said Christopher Kolar.

This study raises many questions, which IMSA is already looking to help answer through further analysis of this study, as well as by participating in follow-up studies. "In the coming year we will be unpacking the data and looking at how specific features of IMSA's academic program influence a variety of learner outcomes. We expect that this will inform future decisions in a wide range of areas, from research and inquiry to admissions, from the hiring, development, and evaluation of faculty to personalized learning," added Kolar. **360**

WITH NEW PARTNERSHIPS, COOLHUB POISED TO EXPAND

MSA's CoolHub was started in 2009 with the goal of becoming the ideal online platform for collaborative innovation, a virtual space where teachers and students work together and with others unconstrained by traditional organizational structures. Though CoolHub has been used within and outside the Academy over the last few years, this year marks an important step in its development. CoolHub is starting two new collaborative projects, the Mentor Matching Engine (MME) and a state-funded partnership with the Illinois State Board of Education (ISBE) to help implement the Next Generation Science Standards, both of which facilitate teachers and students working with university and industry partners.

What CoolHub Does

CoolHub connects students, parents, teachers, researchers, and more through a combination of real world and virtual meeting spaces. The real world spaces, or "CoolSpots," are tech-enabled zones where small groups can meet, and they are connected through a virtual network that includes video conferencing, wikis, blogs, forums, and searchable databases.

"One of the best and most unique features of CoolHub is how customizable it is; every project group can design their own pages, and every member tailors their personal workspace to their preferences," said Carl Heine, Program Director for CoolHub.IMSA. "Like real life (and unlike many collaborative online workspaces), organizations use CoolHub to create a virtual workspace that best fits their individual needs," added Heine.

The Mentor Matching Engine (MME)

The Mentor Matching Engine (MME) was born out of Northwestern University's Office of STEM Education Partnerships' (OSEP) need to connect STEM research mentors with K-12 students. In order to fulfill this need, CoolHub customized their web application to best organize online mentorship projects and, working closely with OSEP, developed the MME as a new platform for mentor, teacher, and student collaboration. According to Adjunct Faculty/Mentor Jacki Naughton, who helped establish the partnership, one of the biggest selling points for using the MME over other e-mentoring sites is its structure of supervised collaboration. "What sets the MME apart is that not only do all mentors have to go through a background check, but teachers supervise every interaction and each project," Naughton noted. "The Mentor Matching Engine provides the support students need to engage in inquiry-based, independent research because they are able to get guidance from experts who have made a commitment to mentor," added Naughton.

Once CoolHub's work on the MME was underway, the widespread appeal quickly became evident, and another partner emerged in the Illinois Science and Technology Institute (ISTI). The ISTI has chosen CoolHub as the platform for the e-mentorship initiative of the State's R&D STEM Learning Exchange, which will connect nearly 50 organizations to 15 Illinois schools with the goal of enhancing college and career readiness. The MME will be the platform of collaboration between these organizations and more than 150

students in its first year. Both public and private organizations will participate in the pilot program, and IMSA numbers among the partner high schools.

Starting this fall, the MME will serve a third purpose: the IMSA TALENT entrepreneurial program will use it to streamline the process of matching IMSA students with internships at 1871, the ubiquitous digital co-op in Chicago's Merchandise Mart. Though the Academy and 1871 have official ties, including an IMSA meeting room within the complex, this will be IMSA's first structured system for matching interns to tech companies.

WIP-5 – The Workshop Institute Partnership

In the coming year, CoolHub will also be used to help Illinois teachers work with the Next Generation Science Standards. The National Research Council, in collaboration with teams from 26 states, recently created these standards to modernize K-12 science education, and the ISBE made the Illinois Workshops Institute Partnership (WIP-5) responsible for implementing them with secondary school teachers. Through grants dispersed across the state, the WIP-5 has enlisted 250 teachers to work with students, university, and industry partners, and they have chosen to use CoolHub as the digital platform for collaboration and content publishing.



To help ease the transition to the new science standards, CoolHub has created a unique public workspace for this partnership. "By allowing teachers to publicly post curriculum, lessons, projects, and results, we hope to quickly build a wealth of digital content that teachers can draw on," said Heine. These teachers have already started training with CoolHub, and they will be bringing in students and outside partners this fall.

The Future of CoolHub

These nascent projects will bring hundreds of new users to CoolHub this year, and though this will certainly keep IMSA's innovation team busy, they believe they are ready to take on the challenges of expansion. "With the right support and savvy, we are positioning CoolHub to continue to spread beyond IMSA's walls, becoming a widely used platform for innovative collaboration throughout Illinois and beyond," said Britta McKenna, Chief Innovation Officer at IMSA. **360**

ONLINE LEARNING:

“Progress is impossible
without change,

MSA is always changing, never forgetting exactly why the state took that leap over 27 years ago to fund an Illinois STEM school. Encapsulated, IMSA exists to deliver advanced STEM teaching and learning opportunities to its residential students and to the interested students and educators throughout Illinois.

Online Learning at IMSA is evolving at a rapid pace, helping to lead the charge expanding IMSA's ability to consistently deliver more and add value to these edicts. Spreading IMSA's proven teaching and learning pedagogy, online learning is also challenging and developing IMSA's faculty in many beneficial ways.

This year multiple online courses and blended programs are being offered. They include courses in mathematics, English, research and inquiry, a teacher candidate institute and others. Below we feature some of these programs, the learning that occurred, and successes.

IMSA's English department aspired to create a class for rising juniors, students who have seen what English classes demand and who need more practice in the conventions of academic writing. They developed a four-week, online course that IMSA students could participate in from anywhere. The course focused on thesis statements, paragraph structure, and quotation integration. Students engaged in group discussions, online research, peer editing, and online quizzes. There was quite a high demand for the Summer Writing course, which originally offered 24 positions, but had more than double that number interested.



While the feedback from surveys is still under analysis, English faculty experienced that most students were highly thoughtful with their online work. Students enjoyed the questions and arguments they were asked to ponder and many chose very challenging topics to research and write about.

There were challenges. Some students lagged behind, which made follow-up more difficult. A change for next year includes adding an application process for the course to ensure commitment from interested students.

“This course will also eventually help IMSA reach out to other students around our state who may not have the opportunity to engage in an academic writing course,” said Dan Gleason, Director of Academic Programs and English Faculty.

The RISE course at IMSA is already reaching out to students outside our walls by offering students in grades 9-12 a year-long research project experience. RISE (Research Inquiry Skills and

and those who cannot
change their minds,
cannot change anything.”

– George Bernard Shaw

Experimentation) is intended for students who are interested in pursuing a higher-level, year long, in-depth study of a science topic of their choosing. This course is now giving over 40 students the opportunity to participate in the community of scientific research and scholarship.

RISE is so popular a second section had to be opened to accommodate all registrants. As of this writing, there have been no students who have dropped, a strong indicator of student engagement.

“Students are currently on module five and we continue to be optimistic about retention,” said Jacki Naughton, RISE Faculty.

“RISE is the single largest start to an online course that I have ever experienced, even when working with a six-month runway for marketing. Online Learning and Marketing and Communications worked together to fill the RISE courses in just three weeks!” said Frank Tomsic, Director of Online Learning for IMSA.

“RISE is personalized learning exemplified, as every student is doing something different for their research project, something they chose,” added Ms. Naughton.

If you would like to be an e-mentor for the RISE course, contact Jacki Naughton at 630-907-5913 or jacnau@imsa.edu.

While we dream of the summer past, the summer math camp at IMSA had students learning before they even arrived. Faculty know that students who attend this camp arrive with varying experience levels. What could they do to get all learners closer to the baseline and have a more valuable camp experience for everyone? Develop an online pre-camp, of course.

When online summer math pre-camp debuted in 2012, it didn't make a big splash. But with further data analysis, faculty realized some students got quite a lot out of the pre-camp. This past summer, online pre-camp was highly successful. It was voluntary and 30 students out of the 44 who were registered for summer camp elected to participate.

“I was not an online teaching enthusiast, certainly not before this experience, but this pre-camp convinced me we should be doing even more. We should expand into other programs,” said Dr. Noah Prince, IMSA Mathematics Faculty.

“It's scary to try and create an online course for the first time. In class you can correct your mistakes right away, but online you have to pay more attention to what you are laying out and doing, which is incredibly

important for the curriculum as a whole. Forcing yourself to work in this platform is really powerful. It makes IMSA classes stronger as well," added Dr. Prince.

Teachers were not exempt this year from IMSA online learning either. Teacher Candidate Institutes (TCI) went to a blended classroom model, where some of the pre-work was done online prior to the two-week program.

TCIs offer teacher education students (TCs) in Illinois an opportunity to encounter a wide range of STEM instructional activities from lesson planning and design to teaching and assessment of student learning in a mentored environment. The program also introduces TCs to IMSA's constructivist approach to pedagogy, with an emphasis on inquiry, problem-centeredness and integrated ways of teaching and learning.

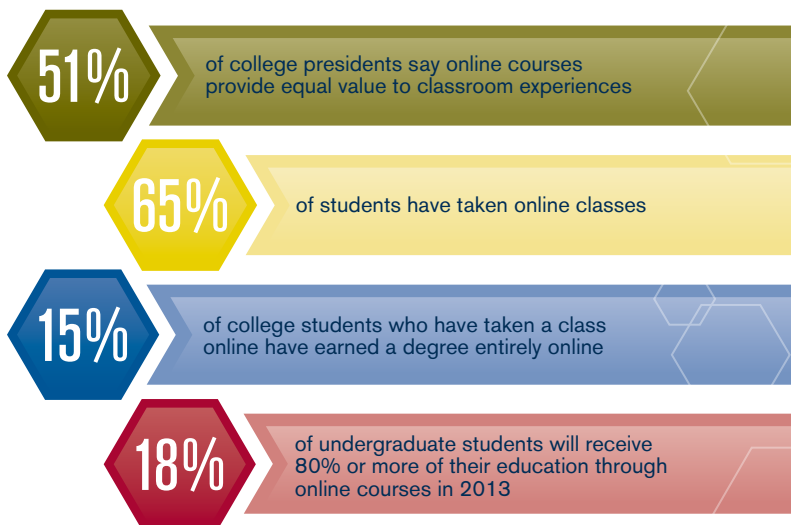
Initial instruction took place online. Then instructors met, in-person, with the TCs to review and practice the curriculum and activities they would teach.

"This was a fiscally responsible way to start this program. It gives the TCs the immediate opportunity to practice a hands-on approach to teaching and learning that's much more inquiry based. The TCs are the guides, teasing students along as they learn," said Dr. Susan Bisinger, Program Director, Inquiry Institutes.

"We've served over 50 TCs in the program since its inception. The TCs really liked the blended program because this year they could go

through it at their own pace. They were able to see everyone's work and collaboratively pick and use the best," added Dr. Bisinger.

There's no question the development of online experiences and resources is at a fever pitch at IMSA. More online programs being offered or developed at IMSA will be featured in our digital IMSA360 magazine at <https://sites.imsa.edu/IMSA360>. **360**



STUDENT/STAFF ACHIEVEMENTS

48 IMSA Students Named National Merit Semifinalists

The National Merit® Scholarship Program recently named 48 semifinalists from IMSA. IMSA semifinalists represent 30 different communities throughout Illinois. Approximately 24% of IMSA's senior class were recognized as semifinalists, in comparison to less than one percent of the average school to enter the nationwide competition.



Sr. James Tao Wins Gold at International Math Olympiad

Senior James Tao outdid himself this summer, winning a gold medal competing for Team USA at the International Mathematics Olympiad (IMO). This is perhaps the biggest international competition in all of high school mathematics, and in the 40 years the IMO has existed, only about ten students from the Chicago area have been named to Team USA, let

alone won gold. Tao competed on the 23rd and the 24th of July in Santa Marta, Columbia, against 600 of the world's most talented students, representing more than 100 countries. James Tao helped lead Team USA to an impressive third overall in the competition.



Jr. Anton Karpovich Gets 1st in U.S. Geography Olympiad - Wins Kyoto Trip to Represent USA

Junior Anton Karpovich blew away the competition in the United States Geography Olympiad on April 26-28, in Arlington, Virginia. He took first place in all three categories, which included a multiple choice, short answer, and a written exam. Consequently he took first place overall in the competition, which earned him the right to represent Team USA at the 2013 International Geography Olympiad (iGeo) in

Kyoto, Japan, on July 30th -August 5th. He was also awarded \$1500 toward the cost of the trip.

Faculty-Turned-Principal Branson Lawrence Wins DiscoverE Educator Award

Before IMSA Science Faculty member Branson Lawrence was named Principal this summer, he was selected as one of only eight runner-ups in the nationwide 2013 DiscoverE Educator Recognition Awards. The DiscoverE awards shine a spotlight on educators who are inspiring innovation by helping students discover engineering. As a result of the honor, Lawrence received a \$500 award, a 3M Shoot 'n Share digital camera, and a 3M gift pack of classroom supplies.



IMSA Alumni Association Cabinet 2013-14

OFFICERS

President

Melvin Bacani '90

Vice President

Amanda Murphya '03

Secretary

Claire Wang '93

Treasurer

Melissa Comenduley '90

AT-LARGE MEMBERS

Samuel Berger '07

Tiffany (Mayo) Chambers '99

Reginald Champagne '02

Kevin Colby '95

Cati Crawford '09

Theresa Geiger '07

Matthew Isoda '02

Amy (Timm) Kinney '95

Sarah McPike '07

Stephanie Song '06



Over the last academic year, IMSA and the IAA have seen alumni reconnect at record-setting levels. The number of alumni who donated to the IMSA Fund last year hit an all-time high. Our combined efforts with the Development Office resulted in a record 16% alumni participation – surpassing our goal of 15%. In addition to monetary donations, the number of alumni who volunteered increased to over 400, more than double the number from last year. The increase is a direct result of our expanding programs that help connect alumni back to IMSA through student programs.

Along with the increase in alumni involvement, there have been numerous other changes for IMSA and the IAA. In addition to newly-appointed President Catherine C. Veal and Principal Branson Lawrence, IMSA also has a new Coordinator of Alumni Relations. Lisa Hellman recently joined IMSA as the primary staff liaison to alumni. While we will miss Carolyn Johnson's involvement on a daily basis, Lisa brings a wealth of experience to the role, and we look forward to introducing her to the alumni community. I am confident that Lisa will help elevate our combined efforts between alumni and IMSA to a new level, and I look forward to her new perspectives.

In July, the IMSA Alumni Association (IAA) also elected a new cabinet. With the energy and enthusiasm of the new members, this year's focus will be to infuse new ideas into our established programs connecting alumni to other alumni, students, and IMSA.

While change is never easy, I view change as a way to reassess and take the opportunity to imbue new ideas and grow. I am looking forward to working with all alumni in the coming year and seeing the positive effects of change. To learn more about IAA activities or to get involved, please visit the IAA website at <http://www.imsaalumni.org>. **360**

Melvin Bacani '90

IMSA Alumni Association President
president@imsaalumni.org

Ann Chen '93

was named as one of "Chicago's Top 40 Under 40" legal professionals by *The National Law Journal*.



Nominate an Alumnus for an IMSA Alumni Award Nominations for the 2014 Board of Trustees Alumni Awards are being accepted now. Visit www.imsaalumni.org/awards for more information.

ALUMNI notes

Gabriel Demombynes '89 is a senior research economist with the World Bank and recently moved with his wife and daughter to Hanoi, Vietnam, after spending three years living in Nairobi, Kenya.

Ramez Naam '90

published his second novel, *Cruz*, a near future sci-fi novel and sequel to *Nexus*.



Ellen (Landers) Levisetti '92

welcomed daughter Colette Annelise Levisetti on August 21, 2013. She joins older sister Allegra Cecily, born in 2009.

Julia Stamberger

'92, CEO of GoPicnic Brands and GPConcept Labs, supported IMSA Alumni Weekend with a generous donation of ready-to-eat GoPicnic meals for all guests.



ALUMNI notes

Jennifer Ellis Ward '93 and Ken Ward welcomed Nicolas Michael Ward on April 25, 2013. He joins big sister Liliana (born December 2011) in their home in Boston.



Jenny Deller '94, writer/director of Future Weather, spoke at this year's Convocation ceremony. **Alan Shramuk '12** played percussion in the featured musical piece.

Sam Yagan '95

was named one of the "Top 100 Most Influential People in the World" by *Time Magazine*. He was also dubbed one of this year's hottest rising stars in *Fortune Magazine's* "Top 40 Under 40" list.



Gita Krishnaswamy '96, a curriculum coordinator for the Kent School District in Washington, was awarded a grant from the U.S. Department of Education's Race to the Top Fund to implement a long-term Problem-Based Learning initiative, in partnership with IMSA.

Ande Croll '97

and Amos Ngola were married on August 3, 2013. Alumni in attendance included: matron of honor Amanda (Leonard) Shanbaum '96, Maciej '97 and Christie '97 (Bruley) Babinski, Ben Chelf '96, Joanna (Messer) Jordan '97, and Doug Pratt '97.



Joanna Messer '97 and Tom Jordan, former IMSA faculty, were married on August 17, 2013.

Jennifer Urbauer-Parsons '98 and Jeremy Parsons welcomed daughter Sagan Rae Lanette Parsons on September 4, 2013. She joins older brother Xavier, born in 2008.

Clare Marie Myers '99 is pursuing her long-held dream of starting a clothing line for "tomboys and adventurers." Her Scout's Honor Clothing Company is based in San Francisco.

Pearl Phaovisaïd '99, a veteran Black Hawk Army pilot and recent graduate of the Harvard Graduate School of Education, was featured in an *Ed. Magazine Extra* video where she talked about the intersection of Buddhism and military service and technology in education.

U. S. Air Force Captain **Kenyatta Ruffin '99** was promoted to the rank of major in a ceremony on September 1, and is a "new generation" member of the Chicago "DODO" Chapter of the Tuskegee Airmen Inc. He is also the recipient of the Tuskegee Airmen Central Region's 2013 Distinguished Service Award.

Jeff '00 and Lacey '01 (Langguth) Margolis

welcomed daughter Ava Grace Margolis on July 22, 2013.



Katrina Herrmann '01 and **Lavina Jadhvani '01** worked on the production of Shakespeare's Twelfth Night at the Oak Park Festival Theatre this summer. Jadhvani was the director and Herrmann served as the stage manager.

Michael Pawlowicz '05 was recently ordained a Catholic priest.

Wei Luo '07 successfully competed in the 2013 USA National Wushu Team Trials and won a position on the 2013-14 USA National Wushu Team. Held every two years, the Team Trials bring together

the country's best athletes in Wushu, or contemporary Chinese martial arts (commonly called Kung Fu). Only the top three athletes from each category qualify for the national team. As a member of the national team, Wei will represent the United States in international Wushu competitions over the next two years.

Sarah Lightfoot Vidal '08

was awarded a Fulbright Scholarship to work in Concepción, Chile at the Centro de Investigación de Polímeros Avanzados (CIPA) in collaboration with the Functional Polymers department at the Universidad de Concepción. Her project focuses on the development of a polymer blend of Polyhydroxyalkanoates (PHA) for wound healing applications. Sarah is a B.S./M.S. student at Drexel University, and plans to pursue a Ph.D. in biomedical engineering.



Shilpa Topudurti '10 is the President of the Students' Association Government at the University of Rochester. A senior majoring in molecular genetics, she is the second female student to be elected, and the first woman to hold the position in the last 15 years.

Dane Christianson '11, a student at Illinois Institute of Technology, created the X-Cube, a more complicated version of the Rubik's cube. Dane's funding goal was surpassed using Kickstarter, and the X-Cube was selected as a top 100 finalist for this year's Chicago Innovation Awards.

What's New in Your Life?

Submit your class note online at:
www.imsaalumni.org/notes

2013 IMSA FUND⁺ ANNUAL REPORT



16 + 9 + 59 = \$10 million?

Letter from IMSA Fund Board President
John Hoesley '89

IMSA Fund for the Advancement of Education

What is the IMSA Fund?

The IMSA Fund for the Advancement of Education is a 501(c)3 not-for-profit organization that raises donations from alumni, parents, friends, faculty/staff, businesses and foundations and uses that money to support the programs and projects of IMSA.

How do your gifts make a difference?

Many supporters of IMSA give to the Annual Fund. These unrestricted gifts allow the leadership of IMSA to use the funds for the areas of greatest need and highest priority. Last year these gifts funded scholarship awards for students and faculty to travel across the country and across the world competing in math contests, presenting research at conferences, and visiting other similar institutions in China. Gifts were also used to help student activities in the residence halls, fund graduation ceremonies, enable minority and rural students to learn about IMSA, provide scholarships to summer camps at IMSA, and obtain new dorm furniture, just to name a few things.

Other donors gave gifts to specific programs and projects, such as the Energy Center, the Robotics team, or our FUSION program that provides math and science enrichment for students and teachers across the state, for example. All of these gifts are very much needed. Thank you for supporting the students, faculty, staff, and programs of IMSA! **360**

16 +9+59 = \$10 million may seem like a poor equation for a renowned math and science academy but it makes perfect sense, trust me. The State of Illinois has generously begun to provide funding for improvements to IMSA's 30-year old facilities. More than \$6 million is being provided toward renovating our residence halls, plus another \$3.5 million for long-needed repairs to our roofs. Almost \$10 million in funding is remarkable!

While many factors account for this turn of events, you – IMSA's supporters – played an important role that you may not realize. At the beginning of last year we asked our current parents, alum parents, and alumni to please help us send a message to our state legislators. We needed you to show that you are truly grateful for the education and life experience that IMSA provided. One way to do that is through donor participation. And you responded like never before with record participation levels from alumni (16%), alumni parents (9%), and current parents (59%). 16+9+59=\$10 million.

The dollar amounts were significant as well. Gifts from alumni totaled more than \$200,000 and gifts from all parents more than \$150,000. We even had single gifts of \$25,000 from a parent and \$100,000 from an alumnus!

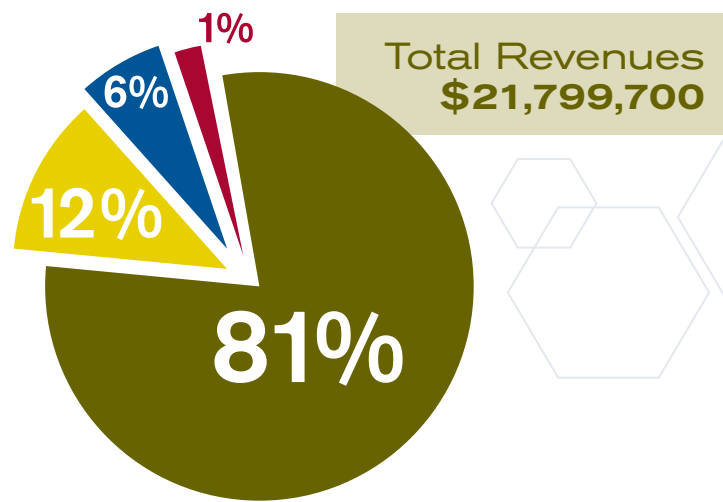
State legislators took notice. After three years of no funding increases followed by a \$600,000 decrease, this year IMSA was one of the few state institutions to receive an increased budget. And others took notice too. Friends of IMSA, non alumni and current student parents, gave more gifts and larger gifts than we have received in recent years. Some specifically cited the increase in parent and alumni participation as a driver in their decisions. If those closest to IMSA care – those one step removed will feel more inclined to begin caring too. 16+9+59=\$10 million.

This year our participation goals are 20% for alumni, 10% for alumni parents, and 66% for current parents. Yes, these are aggressive targets, but IMSA has always stood for doing things differently, doing things better. With your commitment, I feel confident that we can achieve or surpass these goals and send a powerful message to those who are watching. Your gratitude is important in ways you may not have realized. When we call or write please know that you can make a difference in your own way.

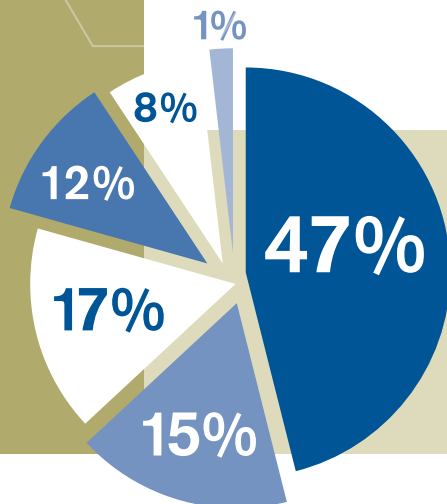
Thank you again for keeping IMSA the world's leading teaching and learning laboratory for imagination and inquiry. **360**

IMSA and IMSA Fund for Advancement of Education

Revenues and Expenses July 1, 2012 – June 30, 2013



Current Year Gifts and Grants \$1,365,400



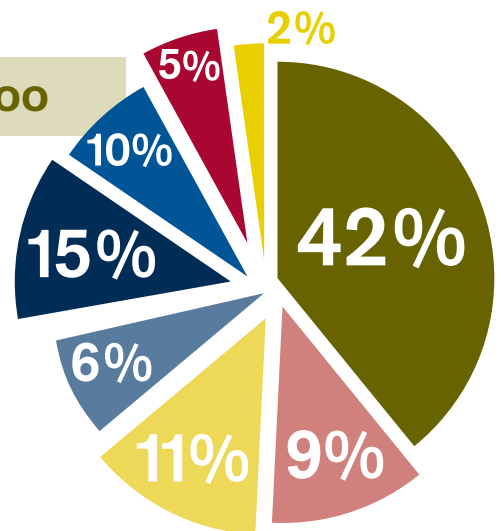
- State
\$17,659,400
81%
 - Program & Student Fees
\$2,516,300
12%
 - Gifts & Grants
\$1,356,400
6%
 - Prior Year Gifts & Grants
\$267,600*
1%
- *(donor directed for use in FY12)

- Private Foundations and Corporations
\$636,000
47%
- State & Federal Grants
\$208,000
15%
- Alumni
\$230,000
17%
- Parents
\$155,000
12%
- Friends
\$109,000
8%
- Faculty and Staff
\$18,000
1%

Audited Financials available upon request.

Total Expenses \$21,799,700

- Residential Academic Program: \$9,145,400 - **42%** (faculty, library, counseling, nurse, etc.)
- Residential Student Activities Programs: \$2,019,000 - **9%** (co-curricular, sports, clubs, meals, trips, etc.)
- Extension Programs: \$2,385,400 - **11%** (serving students & teachers across Illinois and beyond with professional development and math & science enrichment)
- Technology: \$1,405,400 - **6%**
- Occupancy (for all programs): \$3,162,300 - **15%** (student housing, utilities, maintenance, grounds, etc.)
- Administration: \$2,139,000 - **10%**
- Marketing & Communications, Alumni & Parent Relations, and Fundraising: \$1,010,800 - **5%**
- Retained Gifts & Grants (per donors) for FY13 and transfers to Endowment: \$532,400 - **2%**



Endowment and reserve funds invested, held, and pledged for the IMSA Fund = \$5,308,866

The Kaleidoscope Society



The Kaleidoscope Society honors donors whose lifetime giving level has reached **\$10,000 or more.**

These donors are also prominently displayed on the donor wall inside IMSA's main entrance. We thank you for your consistent and significant support of IMSA and its students.

Magenta Society (\$2,500,000.00 +)

The Harris Family Foundation

Violet Society (\$1,000,000.00 +)

The Grainger Foundation

Indigo Society (\$500,000.00 +)

Anonymous (2)
Abbott Fund
Andrew Corporation and its employees
AT&T
Lloyd A. Fry Foundation
Hansen-Furnas Foundation, Inc.
Mr. & Mrs. Robert H. Malott
Alfred P. Sloan Foundation
Tellabs Foundation

Blue Society (\$250,000.00 +)

Michael and Kay Birck
BP America Inc.
Caterpillar Foundation
Virginia B. Cherry
ComEd
Paul Galvin Memorial Foundation Trust
Grand Victoria Foundation
The Hitachi Foundation
Malott Family Foundation
Motorola Solutions Foundation
Toyota USA Foundation

Green Society (\$100,000.00 +)

Anonymous (2)
Albert Pick, Jr. Fund
Alcatel-Lucent
Ameritech-Illinois
AMSTED Industries Incorporated
Apple Computer, Inc.
The Ball Foundation
Bell and Howell Information and Learning
Bell and Howell Foundation
BP Foundation
Samuel M. Cherry Memorial Charitable Trust
The Crown Family
Dillon Foundation
Helen Thom Edwards Charitable Trust
Jean R. Finley
Ford Motor Company Fund
Illinois Tool Works, Inc.
David '96 and Shirley Kang
Fred and Kay Krehbiel
Mr. and Mrs. James R. Lancaster
Dr. Stephanie Pace Marshall and Mr. Robert Marshall
Michael McCool '91
William G. McGowan Charitable Fund, Inc.
J.P. Morgan Chase & Co.
James D. and Marlene F. Pearson
Pittway Corporation Charitable Foundation

Polk Bros. Foundation
J.B. and M.K. Pritzker Family Foundation
Robert Pritzker (Pritzker Foundation)
Rauner Family Foundation
The Searle Funds at The Chicago Community Trust
Sentry Insurance Foundation, Inc.
Underwriters Laboratories, Inc.
William J. and Jane S. White
Sam D. Yagan '95 and Jessica Droste Yagan '95
Jarvis and Tracy Yeh

Yellow Society (\$50,000.00 +)

3Com Corporation
Applied Computer Technology, Inc.
Archer Daniels Midland Foundation
G. Carl Ball
Susan Snell Barnes
The Boeing Company
Mr. and Mrs. G. Thomas Castino
Walter and Virginia Cherry
Community Foundation of the Fox River Valley
Michael & Jacqueline Ferro and Merrick Ventures
Fortune Brands, Inc.
Hamilton Sundstrand Corporation
Richard and Joanne Hansen
Harris Foundation
Greg and Ann Jones & Family Foundation
Drs. Srinivas and Vijayana Jujavarapu
KemperLesnik
Nancy and Herb Knight
The Lehman Brothers Foundation
The Lumpkin Family Foundation
Molex Incorporated
JPMorgan Chase & Co.
Novell, Inc.
Precision Scientific
Qwest Communications International, Inc.
SAP America, Inc.
The Seedlings Foundation
Sigma Aldrich Corporation
Michael Suh '97
In Loving Memory of Scott Swanson '90

Orange Society (\$25,000.00 +)

Anonymous (1)
3M Foundation
Duncan Alexander
Ameren Corporation
Bell Laboratories Library
John F. and Carol Berger
Blue Cross Blue Shield Association
Borwell Charitable Foundation
Caterpillar Inc.
The Chicago Community Foundation
Samuel S. Choi '89 and Karen Choi
Comer Science and Education Foundation Fund at
The Chicago Community Trust

Coopers and Lybrand
Dr. Donald and Dr. Helen Edwards
Fifth Third Bank
Paul and Mary Finnegan
The Forest Fund
W.W. Grainger, Inc.
The Mayer and Morris Kaplan Family Foundation
Mr. and Mrs. Michael Keiser Donor Advised Fund
Ellen and Leon Lederman
Mallinckrodt Veterinary, Inc.
Milken Family Foundation
Richard M. Morrow
Nayak Family
NICOR, Inc.
Mr. and Mrs. Donald E. Nordlund
Nortel Networks
Old Second Bancorp, Inc.
The Pentair Foundation
Rockwell Automation
Rush-Copley Medical Center
S & C Foundation
In Loving Memory of Javal Shah '04
Teacher Today Publications
Toyota Motor Sales, U.S.A., Inc.
UOP
Donald C. Van Pelt, Jr.
In Loving Memory of Mary Van Verst
Varlen Corporation (Mr. Richard Wellek)
Cathy and Bill Veal
Waste Management, Inc.
Winston & Strawn Foundation

Red Society (\$10,000.00 +)

Anonymous (2)
ABS Graphics, Inc.
AmerenCIPS
Ameren IP
American Honda Foundation
Mr. and Mrs. Roger E. Anderson
Mr. and Mrs. Frank Angelillo
Aramark Education
The Associated Colleges of Illinois
AT&T
Aurora National Bank
David Barr
Marjorie Craig Benton
The Grace Bersted Foundation
Best Buy Children's Foundation
Ms. Pamela O. Blackwell
S & E Bramsen Foundation
Dean L. and Rosemarie Buntrock Foundation
Burroughs Wellcome Fund
CBI Foundation
Mr. and Mrs. Tien-Chi Chen
The Cherry Corporation (Peter B. Cherry)
ChicagoFirst
Chicagoland Chamber of Commerce

Chicago Tribune Foundation
 Dr. Harry and Mrs. Sue Chung
 CMS Foundation
 ComCorp, Inc.
 Corporate Development Associates
 Scott and Marci Crawford
 John Deere Foundation
 Dr. Richard F. and Dr. Linda Y. Dods
 Susan K. Eddins
 The Eli Nelson Charitable Gift Fund
 Dr. and Mrs. Floyd English
 FMC Foundation
 Dr. Philip H. and Diana Francis
 Antonio Gracias
 Sheila and Woodie Griffin
 GTE Foundation
 Dr. Lee and Mrs. Jan Gurga
 Terrence J. Hall Family
 Matt Helligge '96
 John Hoesley '89 and Jae Hwang-Hoesley
 In Loving Memory of Bernard C. Hollister
 Chelsy Ann Hopper '92
 Bill and Cathy Howes
 Patrick and Nancy Hurst
 Impact II, Inc.
 Mr. and Mrs. Robert S. Ingersoll Foundation

Intel Science Talent Search
 Michelle and David Joerg '89
 Eric N. Johnson '94
 The Johnson Foundation
 Kirti Kamboj '98
 Mr. William K. Kellogg, III
 John P. and Harriot Kelly
 Mr. and Mrs. Teodozyj Kolasa
 Ada '90 and Alan Kumar
 David Kung '89
 LaSalle Bank
 Bernice E. Lavin Jumpstart Fund
 Mr. and Mrs. Neal K. Levin
 Charles & Ruth Levy Foundation
 Lundbeck, Inc.
 Mr. and Mrs. Fidel Marquez, Jr.
 MK and DD McLnerney
 Vijay S. Menon '90
 Mr. and Mrs. Fred D. Montgomery
 Harle G. Montgomery
 Lorin Murariu '97
 In Loving Memory of Julie Namkung '91
 Neha Narula '99
 Howard and Thea Oberlander
 The Oh Family (Andrew Oh, '89)
 Stephen '00 and Pilar Paige

Ronjon Paul '89
 The Quaker Oats Foundation
 Reyes Holdings LLC
 The Rocking JT Foundation
 Matthew and Tracey Rossi
 Samsung Electronics America, Inc.
 Ed Saunders
 James T. and Mary J. Schaefer
 Stephen and Allison Schmitt
 Sealmaster Bearings
 G. D. Searle & Company
 Mr. and Mrs. Charles Sharpless
 Samuel K. and Mary Jacobs Skinner
 Mr. and Mrs. Robert E. Spitzer
 State Farm Insurance Companies
 Paul Strasma '94
 Eric F. Stuckey '93 and Mia K. Markey '94
 Preston Swafford, Senior Vice President, ComEd
 Phillips Swager Associates
 Tellabs, Inc.
 William A. and Mary VanSanten
 Walgreen Co.
 Bruce and Joan Winstein
 Jasen Yang '96
 Dr. Tito Yao and Mrs. Lilia Yao
 Gloria Ysasi-Diaz and Andrew Surasky

Muon Society

Samuel M. Cherry Memorial
 Charitable Trust, created under
 the Virginia B. Cherry Trust
 Kevin '95 and Julia '96 Colby
 Joshua A. Gerlick '99
 Sarah "Sally" Strayer Levin
 Dr. Stephanie Pace Marshall
 and Mr. Robert Marshall

Maria Pacana '99
 James and Marlene Pearson
 Virginia Kathleen Ryan, J.D. '98
 and Kathleen Theresa Hentsch
 Michael Sloan
 Scott Swanson '90
 Cathy and Bill Veal

The **Muon Society** honors donors who have created a gift to IMSA through their **estate plans** (including bequests, trusts, or annuities of any size).

The Muon Neutrino was discovered by IMSA co-founder Dr. Leon Lederman, for which he won a Nobel Prize. The Muon is one of the longest lasting elements in the universe. Appropriately, gifts from Muon Society donors, often for endowment, are some of the longest lasting. To learn more about making a planned gift to IMSA please contact Paul Milano (630-907-5989, pmilano@imsa.edu).

THANK YOU Corporations, Corporate Foundations, and Foundations for your gifts to the IMSA Fund during the 2012-13 fiscal year. Thousands of students and teachers participated in IMSA programs supported by your contributions!

Legend:

* Includes Matching Gifts
 + Includes payments on pledges made in a previous year

Anonymous (1)
 Abbott Fund *
 Allstate Giving Campaign *
 Ameriprise Financial *
 AMSTED Industries Incorporated *+
 Anheuser Busch Companies, Inc. *
 Aon Foundation *
 AT&T United Way
 Bank of America Foundation *
 Baxter International, Inc. *+
 Blackbaud, Inc.
 Blue Cross Blue Shield Association
 The Boeing Company *+
 Boeing Gift Matching Program *
 BP America, Inc. *
 BP Foundation
 The Capital Group Companies Charitable Foundation
 Carnahan Daniels Foundation
 Caterpillar Inc.
 Samuel M. Cherry Memorial Charitable Trust

ComEd
 Community Foundation of the Great River Bend
 The Crown Family
 Danada Veterinary Hospital, P.C.
 Dart Foundation
 Dillon Foundation
 eBay Foundation Matching Gifts Program *
 Education Research and Development Institute
 Helen Thom Edwards Charitable Trust
 Ericsson Inc. *
 Exelon Matching Gifts for Education *
 Express Scripts, Inc. *
 Fidelity Charitable Gift Fund
 Fidelity Foundation
 Lloyd A. Fry Foundation
 Arthur J. Gallagher & Co. *
 Paul Galvin Memorial Foundation Trust
 GE Foundation *+
 Generations Fund *
 Goodrich Corporation *
 Google, Inc. *+
 W.W.Grainger, Inc. *
 Hansen-Furnas Foundation, Inc.
 The Harris Family Foundation

Hewlett-Packard - Your Cause, LLC *
 HSBC - North America, Inc. *
 The IAC Foundation, Inc. *+
 IBM Employee Services Center
 Ideal Industries Foundation *
 IDG Consumer & SMB, Inc. *+
 Illinois Conservation Foundation
 Illinois Tool Works Inc.
 Intel Foundation *
 International Business Machines
 JPMorgan Chase & Co.
 JPMorgan Chase Foundation *
 Mr. and Mrs. Michael Keiser Donor Advised Fund
 Kirkland & Ellis Foundation *
 KJWW Engineering Consultants
 Kunaland Productions
 Lancaster Family Foundation
 Leo Burnett
 LexisNexis Cares *
 Lundbeck, Inc.
 Mattel Children's Foundation Matching Gifts Program *
 Maxx Products International, Inc.
 McDonald's Corporation *
 William G. McGowan Charitable Fund, Inc. +
 Mentor Graphics Foundation *
 Microsoft Corporation *+
 Mizuho USA Foundation, Inc. *
 Morgan Stanley *
 Motorola Solutions Foundation *
 Network for Good

New York Life Foundation *+
 Newedge USA, LLC *
 Nissan North America, Inc. *
 The Pentair Foundation
 PMMI Education and Training Foundation
 Rauner Family Foundation
 Raytheon Company *
 The Rock Island Community Foundation
 Rush-Copley Medical Center +
 SAP America, Inc. *
 Schwab Charitable Fund
 Sentry Insurance Foundation, Inc. *+
 Society for Science and the Public
 State Farm Insurance Foundation *
 Stillman Foundation Inc.
 SVB Financial Group *+
 SVB Foundation
 Takeda Pharmaceuticals North America, Inc. *
 Teza Technologies LLC *
 United Technologies *+
 Verizon Foundation *
 The Washington Post Company *
 Wells Fargo Foundation Educational Matching Gift Program *
 Wilson Hall (Sumter, S.C.)
 The Xilinx Community Fund, a corporate advised fund of Silicon Valley Community Foundation
 Yahoo! Inc. *

IMSA Fund Honor Roll of Donors

**Fiscal Year
2013 Giving
Societies**

**July 1, 2012 -
June 30, 2013**

The Fiscal year 2013 Giving Societies recognize the generous annual support of our donors by giving levels. These contributions support programs and services for IMSA students and staff, as well as other students and educators in Illinois and beyond.

Legend:

* Includes Matching Gifts
+ Includes payments on pledges made in a previous year

Titans (\$100,000 +)

BP Foundation
David '96 and Shirley Kang
Rauner Family Foundation

Founders Circle (\$50,000 +)

Abbott Fund

Trailblazers (\$25,000 +)

Anonymous (2)
The Boeing Company
Samuel M. Cherry Memorial
Charitable Trust
ComEd
Helen Thom Edwards Charitable
Trust
Paul and Mary Finnegan
Lloyd A. Fry Foundation
Paul Galvin Memorial Foundation
Trust
Illinois Tool Works Inc.
JPMorgan Chase & Co.
Mr. and Mrs. Michael Keiser
Donor Advised Fund
William G. McGowan Charitable
Fund, Inc. +

Pioneers (\$10,000 +)

Blue Cross Blue Shield
Association
BP America Inc.
Caterpillar Inc.
The Crown Family
The Harris Family Foundation
Lundbeck, Inc.
Dr. Stephanie Pace Marshall and
Mr. Robert Marshall *
The Pentair Foundation
Sam D. Yagan '95 and Jessica
Droste Yagan '95
Jarvis and Tracy Yeh

Benefactors (\$5,000 +)

Scott and Marci Crawford *
Hansen-Furnas Foundation, Inc.
Ross and Joyce Hemphill *
John '89 and Jae Hoesley *+
Ada '90 and Alan Kumar
Winjie Tang Miao '94 and Darryl
Miao
Mr. E. Glenn Rippie
Sentry Insurance Foundation,
Inc.
Michael Suh '97 +

President's Society (\$2,500 +)

Ms. Pamela O. Blackwell
Mr. and Mrs. Andrew Burash

Dart Foundation
Dillon Foundation
Education Research and
Development Institute
Paul and Judy Milano
Dan '90 and Michelle Mueth
Stephen '00 and Pilar Paige
Mr. Jay Prasad
Rush-Copley Medical Center +
Andrew Surasky and Gloria
Ysasi-Diaz *
SVB Foundation
Cathy and Bill Veal

Innovators (\$1,000 +)

Anonymous (1)
Sachin D. Agarwal '98
Omar and Ishiani Ali
Kavin Arasi '06
P.J. '98 and Eric Balin-Watkins *
Charles Ballowe '97 *
Joe Beda '93
Jerome Budzik '95 and Anna
Testa
Dr. John Burke and Ms. Vicky
Sroczyński
Leo Burnett Company, Inc.
Dr. James and Mrs. Kathleen
Carson
Tom and Joan Castino
Peter Zhe Chu '94 *
Community Foundation of the
Great River Bend
Marty DiMarzio '95
Jane Fiala
Dr. and Mrs. Peter Geldner
Dr. Stephen Gieser and Dr. Ruth
Williams
Mr. Kenneth C. Griffin
Matt Hellige '96
Allen and Margaret Hensley *+
Ray and Barbara Herr *
James Herzog and Susan
Sanders *
Andrew '00 and Elizabeth
Hoesley *
Michele and David Joerg '89
Kevin and Gail Kalinich *
Mr. William K. Kellogg, III
Diana K. and Dr. C. Ronald
Kimberling
Usha Koganti
John Koval '05 *
Kurt Krukenberg '95 and Charu
Ramaprasad '95
David Kung '89
Daniel Lee '92 and Michelle
Hart '92
Hong-Chin Lin and Chifei Juang *

Alan '94 and Christina
Magerkurth
Max McGee and Jan
Fitzsimmons
Vijay S. Menon '90 *
Joe Nolan
Gautham and Shobha Nookala
Tim and Anju O'Connor
The Oh Family (Andrew Oh, '89)
Junhyun and Inwha Park
James and Marlene Pearson *
Kurt Krukenberg '95 and Charu
Ramaprasad '95
Al and Olga Pomella
Kurt Revis '91
Chuck Rickert '98 and Pooja K.
Agarwal '01
Schwab Charitable Fund
Amanda Leonard Shanbaum '96
Society for Science and the
Public
Jacqueline Pearl Steffen '08
Paul Strasma '94 *
Eric F. Stuckey '93 and Mia K.
Markey '94
Gabe Suarez '90 *
Steve and Carrie Swerbenski
Anil Thacker and Vidya Kotecha
Aaron Thompson '99 and Marina
Sivilay '99
Rena and Matthew VanTine
Jared Wadsworth '96 +
Charles and Denise Yager *
Jasen Yang '96

Ambassadors (\$500 +)

Anonymous (5) *
Chris Andreoli '94 and Denise
Gee
Pramod Atluri '94
P.J. '98 and Eric Balin-Watkins
Andrew Beaver '93 and Renee
Pazdan '93 *
Blackbaud, Inc.
Mrs. Philip Cain
Bangji Cao
Dr. Sanjay and Mrs. Poonam
Chatrath
Mr. Kapil Chaudhary
Andrew Dali Chen '96
Ernest Chu '94 and Stephanie
Chu
Ray Dames '89
Rick and Sabine Derse
Duff and Julie Dimmig
Ms. Marjorie Donath
Amy Downey '89 and Phil
Gartner *

Mark, Carol and Alexander '09
Drummond
Susan K. Eddins
Joy and Gerry Fernandez
Patrick and Emily Furlong
Katlyn Jie Gao '97
Geronimo Garcia, Jr. and Dolores
Estrada-Garcia
Aaron Geldner '14
Nathan Geldner '12
Mr. and Mrs. Jim Gerry
Rick '89 and Jen Gimbel
Mr. and Mrs. Robert Golinvaux
Lauren and David Gordon
Mitchell Gordon '89 and Karen T.
Kiener '89
Groble Family *
Brian M. Grunkemeyer '94
Dr. Lee and Mrs. Jan Gurga
John and Barbara Hecker
Mr. Roger Hohle and Dr. Helen
Dane
Jesse Hsu '93 and Annie Chong
Hsu *
Lingqun Hu and Zhengqi Lu
Illinois Conservation Foundation
Ruozhou Jia '04
Eric N. Johnson '94 and Ruth
Goerger
Trisha Jung '91 *
Terry and Brenda Kardatzke
Mr. and Mrs. Don W. Kim
Michael H. Kim '93 *
Stan '89 and Seonyoung Kim
Kamal Kishore
KJWW Engineering Consultants
Nancy and Herb Knight
David A. Knol '93 and Lora Knol
Vadim and Yelena Kontorovich *
Jordan Miles Koss '89 and Susan
Kim Koss
Mr. Kevin and Mrs. Theresa
Kovach
John Koval '05
Rosanna and Ray Lam
Mr. and Mrs. James R. Lancaster
Daniel Lee '92 and Michelle
Hart '92 *
Tanya Leinicke '90
Marcus and Anne Lieberman
Emily Ling '14
Matthew and Diane Magerko
Mr. and Mrs. J. Fredric
Magerkurth
Thomas and Stephanie Marsh
MK and DD McInerney
Jim and Diana McNish
Barbara Miller
Dr. and Mrs. Najeeb Mohideen
Andrea (Lauterbach) '94 and
Scott Myers *
Tarun Nagpal '93 and Vanessa
Gage '95
G.A. and Aparna Naidu
Julie Y. Namkung Memorial Fund
Andrea (Croll) Ngola '97 *
Nneka and Ejikeme Obasi
Michael and Barbara O'Brien
J. Orloff '90 and Associates Inc.
Dr. Paul and Mrs. Jongmi Park
Aaron Parness '00
Mr. and Mrs. Shashikant Patel
Mr. and Mrs. Yogesh Patel
David and Luzelena Perez
Jacob R. Plummer '96
PMMI Education and Training
Foundation
Matt Pritchard '93
Kelly Jean Rabin '98 and Kevin
Rabin
Dr. Apichart and Mrs. Crystal
Radee
Dr. and Mrs. Frank Radosevich

John B. Randall '97 and Brook
Haley
Erin Roche '89
Thomas Rooney '01
Marsha and Robert Rosner
Barry Schnorr '98
Brian A. Sebbly '96
Dr. Diana L. Sharp
Mr. and Mrs. Charles H.
Sharpless
John and Pamela Simmons
Ravi K. Singh '95
Mr. and Mrs. Robert E. Spitzer *
Mr. and Mrs. Kenneth Spreitzer
Mr. and Mrs. Robert D. Stillman
Andrew Surasky and Gloria
Ysasi-Diaz
Jan and Susan Suwinski
Suchon Tuly '93 *
Shouhao Wu and Zhi Yuan
Anna Yusim '95
Dave and Gina Zager in Memory
of Scott D. Zager '06
Peter and Betty Zhan

Patrons (\$250 +)

Anonymous (5)
Mr. Reuel G. Abraham
Donna and Bruce Ackerman
Ashraf and Neema Ali
Christine Banek '00 *
Grigor and Svetla Bantchev
Bartos Family: Elizabeth '09,
Thomas and Cynthia *
Mr. Eduardo and Mrs. Alejandra
Bistrain *
Gabriel L. Black '93 *
Joanna '90 and Neal Black
Harvey and Elizabeth Blau
Joao Botelho *
Mr. and Mrs. Steve Bottorff
Gottex Fund Management
Brad Boyer '94
William Bunnelle and Leslie
Evans *
Flora Cai
Marsha Carter
Matthew D. Carter '07
Ms. Marie Cerny
Jenny Cheng '06 *
Stephanie H. Chang '07
Frederick W. Chen '93
Jenny Cheng '06
Greg and Jannifer Chien *
Elizabeth Chung '93
Wayne Cowlishaw and Mary
Carhart
Laura Dabbish '96
Mr. John D'Arcy, Jr.
Daihung Do '91
Dr. Richard and Dr. Linda Dods
Hongliu Du and Mindong Pi
Joe and Ida Dunham
Paul and Melanie Earle
Anne Elliott '95
Mr. and Mrs. Lorenzo Esquivel *
Brian '93 and Rita '94 Etscheid *
Mr. Gabriel Flores
Mr. John and Roxanne Frey
Mr. and Mrs. Richard Frey
Raja and Yamini S. Gangavarapu
Benjamin Gertzfield '97 and
William Hamilton Strickland
Mike and Kati Gleeson *+
Mr. Barry Glicklich and Ms.
Katherine Lato
Benjamin T. Go
Dr. Benjamin '93 and Desiree
Gold
Ethan Gordon '13
Gretchen E. Green, M.D.,
M.M.S. '92
Nita and Monte Groothuis

Neal Groothuis '97
 Mark and Gayle Grunberg
 Martha C. Guarin
 Terrence J. Hall Family
 Ravindra and Suneela Harsoor
 Kathy He and the Wu Family *
 Leon Heller
 Steve and Judy Hennenfent
 Bob, Margaret, Connor, Molly
 and Erin Hernandez
 Sarah and Win Hindle
 Mr. and Mrs. John J. Hoesley
 James Holmes '03
 Manxing Huang
 Mr. and Mrs. Sorin Ignat
 Kraig '95 and Sarah Jakobsen *
 Miyam Jankov '99
 Dr. Mary Kalantzis
 Brian Kambach '99
 Hiechan Kang and Mikyung Kim
 Valdimir and Yulia Karpovich
 Vijay Karunamurthy '96
 Joe '91 and Naomi Kestel
 Rajesh Keswani '94
 Ahsan and Anjum Khaja
 Alok Khuntia '93
 Anne L. Kinderman '95
 Vinita Kishore
 Takayuki Kohata '94 and Yoko
 Kohata
 Dr. and Mrs. Vasu Kulkarni
 Julie Lauffenburger '03
 Branson and Ann Lawrence
 Apinya Lertratanakul '93 and
 Alex Chang
 Nathaniel C. Leung '99 and
 Ruth Lin
 Arthur Li '14
 Jack and Brenda Lilley
 Zheng-Tian Lu and Diyang Wu
 Wei Luo '07
 Rebecca Machalow '98 *
 Elise A. Marifian '07
 Jack and Marie McEachern
 Dr. and Mrs. Eric McLaren
 Timothy A. Messer '00 and
 Rosalie Messer
 Don and Paula Meyer
 Mr. Roger and Mrs. Therese
 Moore
 Ash Morgan '94 *
 Jill Mosshamer
 Andrea (Lauterbach) '94 and
 Scott Myers
 Somasundaram Narayanan and
 Geetha Somasundaram
 Rowena Torres-Ordonez *
 Mr. and Ms. Mario Ortiz
 Joselito and Diana Pacheco *
 Michael and Lynnette Palmisano
 Connie Jung Park M.D. '01 and
 Brian Park '01
 Mr. and Mrs. Vinod Patel
 Tony Pechi
 Jacob R. Plummer '96
 Dr. Yimin Qin and Dr. Jing Li *
 Mr. Narendra and Mrs. Gowri
 Rao
 Dr. and Mrs. Paul Reith
 Badri Rengarajan '89
 The Rock Island Community
 Foundation
 Dr. and Mrs. James Rydland
 San Francisco Foundation
 James Sanders '03
 John and Ann Satter
 Dale and Annette Schuh
 Mr. and Mrs. Travis Scott *
 Brian A. Seby '96
 Mr. James Shen and Mrs. Linda
 Yu
 Mark Simmons '05
 Irene Sofil '99 *

Amy Courtin Sohl '89 and David
 Sohl
 Mr. and Mrs. Rajendra Sonarikar
 George W. Su '94
 Christopher T.
 Sukhaphadhana '97 *
 Prakash and Dinaz Tambe *
 Brian Tao
 The Tennenhouse Family
 Adam M. Theros '93 and Rachael
 Theros
 Richard R. Tung '93 *
 Stephen and Tammy Valentine
 The Walders
 Hong Wan and Derhsiang Hsueh
 Claire C. Wang, M.D. '93
 Sarah Warning '01
 Angela M. Weis '03
 Michael Yang and Carol Zhang
 Jeremy and Jean Yu
 Matt Zanon '97
 Bob Zhang and Jane Liu *

Associates (\$100 +)

Anonymous (25)
 Nikhil Agarwal '01
 Mr. Vinod and Mrs. Kalpana
 Aggarwal
 Olusola and Erewa Ajayi
 Sherriff and Tameka Alli-Balogun
 Paula and David Altekruse
 Alaina M. Anderson '93
 Arjunakani Arjunan and
 Thangeswari Arjunakani
 Dr. and Mrs. Kent Armbruster
 Ramiro Arrez
 AT&T United Way
 Dr. MG and Doris Aung
 Brian Baker '05
 Jason and Karen Ball
 Diana Tung Barnes '02 and Jason
 Barnes '01 *
 Lizz Bartos '09
 Jeanine M. Batterton '96
 Christopher Beck '92 and Nicole
 P. Aranas '93
 Joe Beda '93
 Mr. and Mrs. Steven Berger
 Bud and Victoria Bergie
 Julia de Caradeuc Bernd '94
 Emlyn Bertsche
 Angwo Bian and Honmin Chen
 Jean Bigger
 Susan and John Bisinger
 Kathleen (Ervin) '96 and
 Jonathan Booth '96 *
 Mr. and Mrs. Brian Borecky
 Kent Borecky '00
 Jonathan A. Bragg '06
 Doug and Charlene Brandt
 Catherine Breckenridge '02
 Mrs. Andrea Brody
 Michael H. Brody '96
 Gary and Julie Brown
 Richard and Michelle Bubulka
 Barbara A. Buchthal '93
 Dr. Mary Budzik
 William Bunnelle and Leslie
 Evans
 Bradley and Stephanie Byrd
 Steven and Vanessa Byrd
 William and Shannon Calice
 Louis Camras
 The Capital Group Companies
 Charitable Foundation
 Carnahan Daniels Foundation
 Sara A. Carson '96 and Eric
 Carson
 Chris Caruso '89
 Jen Cha '93
 Gary and Laura Chandler
 Ann H. Chen '93
 Mr. Huayun and Mrs. Wei Chen

Mi (Amy) Chen '06
 Yong Chen '02
 Michelle Cheng
 Nina Chinosornvatana '96 and
 Phillip Kang
 Mr. Swee Hock Choo and Mrs.
 Kiang Lian Chin
 Kevin T. Chu, Ph.D. '94 and Anna
 Chiu, Ph.D.
 Dr. Arnold D. Chung '89
 Julie Ciota and Nathan Ciota
 Kevin Clair '00
 Crystal T Clark '97
 Linda L. Cline
 Elizabeth Cohen '97
 Shan Colletti '03
 John and Lynn Collier
 Timothy Collins and Shannon
 Price
 Julie Comerford '98
 George and Beth Concar
 Mr. and Mrs. Charles Corrao
 Nathaniel S. Covert '02
 Ron and Cox
 Steve Crutchfield '93
 John Curtis and Karen Mauldin-
 Curtis
 Martin and Beth Daly
 Anand Dash '98
 Sophia Davenport '89
 James and Julie Day
 Derek and Jackie Dearborn
 Hui Deng
 Zhimin and Yanping Deng Family
 Daniel DeUgarte '90
 Richard and Laurie DiLorenzo
 Xiangyu Ding '06
 Gary and Lucinda Dittmer
 Mr. and Mrs. Michael Do
 Mr. Mingchun Dong and Ms.
 Frances Fan
 Drs. Jared and Maryann Dorn
 Mykal Dortch '02 and Kathleen
 Dortch
 Tim and Rebecca Douglas
 Ms. Ruth Dover
 Julie Dowling '99
 Matt Drake '06
 James and Sheryl Droste
 Karen Druffel
 Jude and Julie D'Souza
 Katie Duncker '97
 Jim and Suzanne Eagle
 Dr. Sherry R. Eagle
 Jaime L. Eigner '96 and Marc
 Eigner
 John W. Ellingson '89 and
 Anoinette Ellingson
 Thomas and Kathryn Elliott
 Patricia B. and Donald E. Elmore
 Kaori C. Ema '03
 Mrs. Elaine L. Emanicipator
 Michelle Emanuel and Teodoro
 G. Alonso
 Julie May Eng '00
 Heidi '95 and Anthony '95 Engel
 Liza '94 and Anthony Escudero
 Mr. William and Mrs. Regina
 Etherton
 James Wilcox Ethington '99
 Dr. Michael Evans and Ms.
 Suzanne Ginger
 Kurt Ewen '89 and Kim Ewen
 Michael and Tuly Faden
 Dan and Linda Fane
 Peter Fang '94
 Megan Fast '01
 Anne Catherine Feltovich '99
 Paul and Joan Feltovich
 Ms. Patricia A. Ferriter
 Paul and Cindy Flynn
 Robert Forler '05 and Samiyah
 Siddiqui

Joyce and Martin Fornek
 Jacob Foster '04
 Dan Frakes '89 and Jennifer
 Henderson-Frakes *
 Jill and Steve Franks
 John and Kimberly Freund
 Brad '96 and Irene '96 Friedman
 Wendy Melissa Gable '01
 Jack Gall
 Ki J. Gang
 Mr. and Mrs. Gary Garrison
 Jake M. Gerstein '95
 Dr. Zenebe Gete and Mrs.
 Mantegbosh Yohannes
 Dr. Edwin and Ms. Linda Goebel
 Mr. and Mrs. Edictor Gonzalez
 Carol Robinson and Art Gould
 Thomas J. Gower '96
 Sheila and Woodie Griffin
 Matt Groch '93
 Dr. Feng Guan and Dr. Yue Liao
 Drs. Bitthal and Meena Gujrati
 Alok and Abha Gupta
 Luis and Jacqueline Guzman
 Dr. Irfan Hafiz and Dr. Nausheen
 Din
 Wei Han and Rongjuan Yang
 Charles and Robin Hannon
 Tim Harms '92
 Dr. Katherine M. Hashimoto '90
 Greg and Sharon Hatz
 Morgan Hawker '95
 Sikander Hayat
 Mr. Gregory and Mrs. Sophia He
 Dr. and Mrs. Carl Heine
 James and Paula Hellige
 Cynthia and Eric Helm
 Jonathan Helm '99
 Tom and Ginny Helm
 Dr. and Mrs. Leo Henikoff
 Cathy and Dan Herdeman
 The Hermes Family
 William and Denyse Herrmann
 Jamison A. Hill '06
 Tom and Patti Hizek
 Thomas and Margarita Hoffman
 Matthew J. Holliman '93
 Mrs. Victoria E. Hollister
 James Holmes '03
 Andrea Hong '97
 Haiping and Jane Hong
 Jianqing and Suethei Hong
 Avery '97 and Michael Hoppa
 Dave and Marian Hopper
 Matthew G. Horr '93
 Steve and Melissa Hrcek
 Caiping Huang
 Vanessa '93 and Ryan Hughes
 Robert and Ellen Huxtable
 Mr. Conrad Iandola and Dr. Sonia
 L. Nelson
 Mohammed Ibrahim and Karen
 Fann
 Stacia Ilchena '01 and Nick
 Ilchena
 Grigory and Mila Ioffe
 Steven T. Isoye
 Matthew M. Ito '04
 August Jackson '93 and Barry
 Clukey
 Reginald Jackson '97
 Mr. and Mrs. Nitin Jain
 Tony and Sheryl Jedlinski
 Mindy Jian '13
 Jane Jih '99 and Eddy Chen
 Juan and Claudia Jimenez
 Zhongmin Jin and Ying Xiong
 Radhika K. Joag '00
 Mr. J. Larry Jobe
 Anjali Johnson '00
 Carolyn and Bill Johnson
 Mr. and Mrs. Jay Johnson

Thomas '98 and Dana '98
 Johnson
 Michele Jonsson Funk '90
 Alan and Harriet Josephson
 Tashil Ju '98
 Leslie and Michael Juby
 Soon Yung Jun and Seon H.
 Jun Eun
 Adam Kalinich '12
 Cliff S. Kane '95
 Judy H. Kang '01 and Tommy
 Mei
 Arun Karumanchi
 Jeffrey and Sheila Katz
 Mr. Christopher Kauffman
 Lee Kaufman
 Charles Keaton '05
 Jim and Marlene Keenan
 Jim and Jean Keeney
 Eric J. Keller '95
 Garry James Kennebrew, Jr. '04
 and Robbie Kennebrew
 Judy Kenney
 Bernard and Sheila Kestel
 Ms. Angela Kieess
 Alice Kim '98
 Arnold Kim
 Francis N. Kim '95
 Han Y. Kim '94 and Aileen Kim
 Jason H. Kim '91
 Mr. and Mrs. Jason Kim
 Juhee Kim '98
 Yong and Hee Kim
 Kathleen A. King '01 and Steve
 Raciti
 Elizabeth Kinsella '92 and Sean
 Kinsella
 Charlie Kinzer '03
 Mr. and Mrs. Ravi Kiran
 Sandra L. Kirmeyer and
 Nathaniel Hausfater
 Dr. and Mrs. Robert Knol
 Terry Koo '99
 Amanda (De Zutter) Kotlyar '97
 Karen and Sheil Kottkamp
 Melanie S. Kotys '95
 Mr. and Mrs. Paul Krause
 Raj Krishnan and Eswari Raj
 Austin Krumpfes '91
 Mr. and Mrs. Jerzy Kryczka
 JaEun Ku and Yoon Lee
 Samantha Laxman and Jayashree
 Kumar
 Usharani and Mohan Kumar
 Drs. Michael Kuna and Julie
 Nelson-Kuna
 Mr. and Mrs. Matthew Kurian
 Patrick Kutz '94
 Mr. and Mrs. Dongsoo Kwak
 Rosanna and Ray Lam
 Sarah L. Lambert '03
 Andrew Blake Langan '02
 Sam Lao
 Lucinda Lawson '98 and Joshua
 Miller
 Jon-Paul Leduc '91 *
 John and Grace Lee
 Kyung-Un and Seon Lee
 Mr. Sae Lee
 Christopher and Christine Legan
 Mr. and Mrs. Thomas Leonard
 Youngsuk and Manvika
 Lertratanakul
 Nathaniel C. Leung '99 and
 Ruth Lin
 Rich and Esther Levey
 Karen Stallman and Brian Lewis
 Shawn Lewis and Theresa Szeto
 Mr. Chengchang Li and Mrs.
 Yunfang Gao
 Demmaree Lilley Li '94
 Mr. Pui Mun Lee and Dr. Lan Li

(Continued on next page)

(Continued from previous page)

- Mr. Zhigang and Mrs. Amy Liang
 Aaron Lieber '92
 Nicholas S. Lilovich '04 +
 Jet-Sun '93 and Jennifer Lin
 Emily Ling '14
 Mary Lou Lipscomb
 Ariel Liu '09
 Mr. and Mrs. Chuan S. Liu
 Dr. Guang Liu and Mrs. Sunny
 Chen
 Joseph Liu '03
 Peter Ping and Susan Liu
 David P. Loveland '06
 Robert and Sarah Loviska
 William and Donna Lubbecke
 Aubrey E. Lutz '04
 Sandy Lux '91
 Mr. and Mrs. Javier Macias
 Katherine Mackenzie '03
 The Magyar Family
 Elizabeth Malecha '90
 Michelle Malenke
 Timothy Mangan and Karen
 Sample
 Patri Marconi '98 and Andrew
 Yin
 Mr. Miguel and Mrs. Aurora
 Marquez
 Lisa Martin *
 Abraham and Luz Martinez
 Ramiro and Maria Martinez
 Walter and Shirley Massey
 George and Gail Mavrogenes
 Robin May-Davis '90
 Jessica McAlear '00
 Paul and Shannon McDermott
 John Philip McFerrin '98
 Maura E. McLaughlin '95
 Dara and Gloria Meas
 Amy Patricia Meek '98
 Dr. Daksha Mehta
 Darshan H. Mehta '94 and Swati
 Mehta
 Parthiv Mehta '92
 Emily A. Mellott '91
 Dr. and Mrs. Sukumaran K.
 Menon
 Mr. Daniel and Mrs. Muriel
 Messer
 Michuda Family
 David Byung Min '96 and Megan
 Moore Donohue
 Brian Mirous '96
 Gokula Mishra
 Dale and Maria Mitchell
 Mr. John and Mrs. Gail Mitchell
 Jennifer Mo '02
 Kara L. Molenhouse
 Kirsty Montgomery and Chris
 Hasselbring
 Michael Montgomery and Peggy
 McClanahan
 Christopher and Diane Moreno
 Howard and Jie Morris *
 Justus Morris '95
 Stacey Resetar Mowers '99 and
 Matt Mowers '98
 John and Hema Mowli
 Bin Mu and HaiLin Yan
 Munjeti Family
 Amanda Murphy '03 and
 Richard Yao '03
 Sivakumar Muthuswamy and
 Anupama Ramamurthy
 Mary Jane Myers
 Scott and Anne Nagro
 Arun Narang M.D. and Sunita
 Narang
 John and Jonel Near
 John '94 and Julie Nelson
 Penny and David Newton
 Laurel Nolen '90
 Pier and Barbara Oddone
 Paula and Chris Kubilius
 Joy R. Ott '92
 Maria Pacana '99
 Brian Page '11
 Lucas '94 and Mariel Pain
 Ann Pan '07
 Pariti Family *
 Dr. Paul and Mrs. Jongmi Park
 Tom Parkin and Tibby Murphy
 Jeff and Barb Parness
 Sandeep Paruchuri '08 *
 Mr. and Mrs. Babulal Patel
 Dusiyant A. Patel
 Mr. Hasit Patel and Mrs. Kiran
 Patel
 Mikin Patel '04
 Monica Patel '13
 Parimal and Nishita Patel
 William Paterson '95
 Mary B. Patterson
 Matthew R. Pearl '94 and Connie
 Hsu
 Paul and Cynthia Pederson
 Lynn Qin-lin Peng '02
 Ronald and Kathy Petersen
 Cari L. Peterson '09
 Mr. and Mrs. Keith R. Peterson
 Paul and Peggy Peterson
 Greg and Sabrina Petesch
 Joe and Michelle Pfeiffer
 Mr. Jose Philip and Mrs. Maria
 Mathai
 Mr. David Phillips and Mrs.
 Valerie Beech
 Jeff and Jenny Phung *
 Michael and Joan Pierce
 Mr. Socrates Ponnusamy and
 Mrs. Sujatha Socrates
 Sysounanh and Pattarawadee
 Pradaxay
 Christina L. Prested '00 *
 Jagdish and Vina Purohit
 Dr. Yimin Qin and Dr. Jing Li
 Walter and Carol Quandt
 Michael A. Quick '97
 Chris and Elizabeth Quigg
 Robert Quimby '03
 Eric R. Quinn '92 and Melissa
 Quinn
 Andrew Raatjes '97 and Erin
 Raatjes
 Mr. Dennis Rabe and Ms. Karen
 Rubrich
 Rajan Rajbhandari '91
 Karen Rakers-Dowd '94
 Ravi Ramakrishnan and Radhika
 Srinivasan *
 Benjamin and Maria Ramirez
 Caitlin Ramsey '03
 Brian and Evelyn Randall
 Ranjeet Rao '97
 Sumit and Archana Ray
 William and Celestine Reda
 David '89 and Dawn Marie '89
 Reed
 Sendhil Revuluri '90 and Venu
 Gupta
 Jason Ribando '90
 Jay and Jane Rich
 Mr. Ronald and Mrs. Sandra
 Richard
 Gerard and Elizabeth Rickert
 Aracelys Rios
 Minji Ro '02
 Shaun Alan Roach '01
 Jason Rock '08
 Timothy Roderick '03
 Benjamin V. Rodrigues '07
 Andres and Lynda Rosa
 Mr. and Mrs. Barry Rosenberg
 Erik '89 and Gloria Rothbaum
 Pravin and Bharati Roy
 Mr. Mark Ruffin
 Pratyush Rustagi
 Aquila Ryu '15
 Gwan Ryu and Jae Shin
 Davender Sahota '99
 Mike and Judi Salkas *
 Natasha D. Sansone '06
 Mr. and Mrs. Nitin Sarode
 Sushant Satpathy and Ipsita
 Mahapatra
 Dr. Robert and Mrs. Carolyn
 Sawicki
 Jeff and Linda Schielke
 Ernest and Denise Schirmann
 Kyle Schirmann '08
 Brandon Schlesinger '99 *
 Gerald and Diane Schulz
 Mr. Jay Schwartz
 Chuck and Laurice Sears
 Polina A. Segalova, Ph.D. '01
 Mr. and Mrs. Roger Seibert
 Dr. Venkat and Dr. Uma Sekar
 David and Stella Senning
 Jessica R. Senning '02
 Mr. Anil and Mrs. Anjna Sethi
 Mr. and Mrs. Achyut Setlur
 Mr. Nilesh and Mrs. Beena Shah
 Ruiju Shen and Xuhong Shang
 Laura Janine Sharpless '05
 Meredith Shaw '96
 Dr. Salman Sheikh and Dr.
 Anooosh Salman
 Chandra and Archana Shekara *
 John and Alice Shepard
 Juris Shibayama '92
 David Chen-yu Shih '97
 Mr. and Mrs. Edward Shinn
 Megan L. (Mandernach)
 Shober '95
 Jason W. Siefferman '99
 Katie Siemens '05
 Ann Simmons
 Ajay and Shalini Singh
 Mr. Vikas and Mrs. Anuradha
 Sinha
 Erin Slone '97
 Mr. James and Mrs. Linda
 Smedinghoff
 Kelly Wojcik Smith '90
 Mark A. Smith '89
 Mr. and Mrs. Michael Smith
 Thomas and Christine Song
 Dr. and Mrs. Danilo B. Soriano
 Steve and Linda Spencer
 Ray '93 and Jane Stadt
 Phil Stanton '03
 David and Angela Stolzoff
 Andrea Stonecipher '90 and
 Family
 Larry and Judy Strain
 James and Gloria Studnicka
 Lucas Sturnfield '03
 Angela Suh '08
 Mr. and Mrs. Joong Suh
 Patricia A. Sullivan '95
 Ramona Sullivan
 Tracey Sullivan-Covert
 Nelasari Sumali
 Mr. Kalyanasubbu Sundaravelu
 and Dr. Roselin Arunachalam
 Katerina A. Swanson '96
 Christopher E. Szucko '03
 Mr. and Mrs. Prasad Talluru
 Mr. Dongping and Mrs. Lucy Tan
 Adam Taylor '90
 John R. and Nancy Taylor
 Dr. and Mrs. Rogers Taylor
 Mr. and Mrs. William Teller
 Hongyu Teng and Yiqing Chen
 Adam E. Tenhouse '07
 Prakash Thimmapuram and
 Sasidevi Buchupalli
 Chris and Tim Thompson *
 Glenys A. Thorstenson '92
 Bruce and Barb Tietz
 To Family
 Drs. Deepti '95 and Veeral Tolia
 Richard Tsai '90 and Cecilia Tsai
 Michael J. Tu '04
 Anthony Tucker
 Jacek and Theresa Tyszkiewicz
 Matt Unterman '93
 Mr. and Mrs. Louis Vago
 Tom and Janet Veihman
 Anupam Verma
 The Vimawala Family
 David and Janet Walker
 Aimee Walter '90
 Mr. Ching-Tung Wang and Ms.
 Julie Shi
 Connie and Lawrence Wang
 Ligong Wang and Xiao Song Ren
 Zhibi Wang and Xiaoli Jiang
 Joel Ward and Laurie Sauer
 Winn W. Wasson '01
 Alice C. Watson '90 and Peter
 Watson
 Suzanne Weber, M.D. '91
 Raymond Wee '94 and Ann Wee
 Tom and Marilyn Weisner
 Dale and Kim Weitekamp
 David and Susan West
 Dr. Herman B. White
 Tiffany White '02
 Damian M. Wiest '94
 Randall Winans
 Vida Winans
 Mr. Lukasz and Mrs. Malgorzata
 Wojtaszek
 Mr. David Wolfe
 In Memory of Colin '08 - Dan,
 Angela, Ryan '05 & Rory
 Woods
 Amanda V. Wozniak '99
 Anthony and Debra Wrenn
 Richard Wright
 Mr. and Mrs. Chung Wu +
 Jane Wu
 Jim Castillo and Lisa Wu '92
 Xuanhong Wu and Yanping Shen
 Yawen Wu and Tianying Jiang
 Gus Xinos '97 and Kelley Xinos
 Hongbo Chen and Lichun Xu
 Michael and Leah Xu
 Xiaoliang Xu and Kathy Cai
 Lingyun Pan and Wen Ye
 Guna Yerrabolu '15
 A. Clay Young '89 and Monica
 Cline
 Qian and Qiang Yuan
 Mr. Andrew Yun and Ms. Soon-
 Young Jeon
 Christopher and Anita Zeifert
 Timothy and Nora Zeller
 Ms. Sharon G. Zelman
 Dr. Steven J. Zelman
 Jiao Zhang and De Yang
 Jun Yue Zhang '08
 Richard Zhang '06, Vivian
 Zhang '12, Jiao Zhang and
 De Yang
 Song Zhao and Xiao Wang
 Feng Zhou and Kaimin Xu
 Mr. Yan Zhu and Mrs. Ying Qin
 Mr. Radoslav and Mrs. Milena
 Zlatanova
 Marisa Zuskar '99
 Peter Adamczyk '98
 Mr. and Mrs. Michael Adams
 John Frederick Bart Addison '01
 Amanda J. Adeleye '04
 Ruchi Aggarwal '11 +
 Purusharth Agrawal '91
 Yaw B. Agyemang '96
 Jawwad Akhtar '05
 Lisa O. Akintilo '11
 Dr. Tunji and Mrs. Omolara
 Akintilo
 Mr. and Mrs. David A. Akstins
 Susan Albrecht
 Mr. and Mrs. Lyubomir
 Alexandrov
 P.J. Alfred '90
 Soham Ali '13
 Andrew Alonso-Emanuel '13
 Jacob Ament '97 and Connie
 Ellis Ament
 Margaret J. Anderson '00
 Michelle Anderson '97
 Roberta Joy Anderson '94
 Ryan Anderson '91 and Thao
 Anderson '91
 Tom Anderson
 Cindy Angpraseuth '11
 Anna Feltes Aquino '89
 Katherine E. Arenas '11
 Mr. and Mrs. Santos G. Arenas *
 Michael and Allyn Armour
 Rebecca L. Arnal '89
 Tasha Arvanitis '11
 Michael Atten '12 +
 Lydia Auch '13
 Tim and Michele Auch
 Jake Edward Ayala '10
 Jack Aylesworth '13
 Aylesworth Family
 Adel Azzam
 The Bacani Family
 Megan Bacani '13
 Jennifer Bailey '12 +
 Karen Ballinger '95
 Evan Balzuweit '10
 Susan and Russell Banjavcic
 David and Jeanine Baran
 Mr. Randall and Cathy Barnes
 Patricia L. Barnett
 Chelsey Bayer '06
 Betsy and Brad Beatson
 Wesley Beck '13
 Donald and Lorraine Beers
 Jim Begley '90
 Girlish and Vaishali Belsare
 Steven P. Benario '04
 Michael and Charlotte Bennett
 Rachel Benoit '92
 Samuel Berger '07
 Richard W. Bergstrom, Jr. '94
 Leah Berman Williams '93
 Judy and Benedict Bernardo
 Stephanie Bernardo '10
 Mr. and Mrs. Joseph Bernier
 Christopher J. Berry '96
 Amanda S. Besinger '02
 Shelly S. Bhanot '10
 Shreyas Bhat '03
 Paras D. Bhayani '05
 Carol Knisley Bishop
 Andre Bistrain-Diaz '13
 Mr. and Mrs. Leland J. Blain
 Justin Edward Blanchard '02
 Michael and Mary Ellen Blanding
 Mircea and Vali Bogdan
 Rao and Rohini Bokka
 Allison and Dave Boldridge
 William Cliff Boldridge '08
 Kora Bongen '04
 Jorrell R. Bonner '07
 Joseph Bonomo '91 and Ellyn
 Stewart

Supporters (Up to \$99.99)

Anonymous (47)
 Phillip and Dana Abraham
 Jorge Acosta '13

- Robert and Kelli Borchering
Ms. Cathy Boren
Matt (Born) Bornski '03
Sylvester Botelho '13
Ty Bottorff '13
John Bozarth '90
Wesley Tomson Bradley '11 +
Kevin and Laura Brady
Jessica (Yokley) Brand '99
Duncan Breedlove '13
Jami Breslin
Terry and Debra Broadwater
Henry and Hiroko Brockman
Kazami Brockman '13
Dr. Sandra Boyce Broomes
Ayun Brown '13
Larry, Kim, Benjamin, Lauren
and Emily Brown
Mike J. Brown '90 and Amy
Brown
Nicole Brown '00
Will and Jody Buergey
Jordan McNair Burdnie '05
Vicki and Tony Burgholzer
Charles R. Burke
Christopher C. Burke '93 and
Dawn Burke
Claire Burke
Ms. Debra Burtin
Gregory and Althea Busby
Ms. Brenda Buschbacher
Mr. Steve and Dr. Ann Butcher
Charles and Suzanne Butler
Kendell Byrd '13
Emily Camras '13
Adam T. Carpenter
Mary P. Carter '96
George L. Chadderdon '89
Lisa M. Chambers '97
Alice Chang '13
Jason Victor Chang '00 and
Melissa Chang
Kevin Chang '06
Liyan David Chang '08
Jennifer Chapin '94
Ajay Chatrath '12
Sylvie Chau '00
Angela P. Chen '93 and Jamie
Wilkie
Audrey M. Chen '96
Brian Chen '13
Gary Chen '13
Weiyue Chen and Jia Yi Zhu
Mrs. Zhikun Chen
Nathan Cheng '06
Karen Chesley '98
Brian H. Chien '13
Kathleen Chinetti '13
Chinetti Family
Seong-Ah Marcella Cho '08
Zi-Ning Choo '13
Zafar Choudhry
Dane H. Christianson '11 +
Mrs. Julie A. Christman
Henry Milton Chu '00
Wei-en Chu '13
Sharadyn Ciota '13
Mike and Kathy Clair
Vanessa H. Clark '00
Kevin '95 and Julia '96 Colby
Emily I. Coleman '04
Mr. Brian Collender
Brianna Collender '13
Steven Edward Collins '89 and
Sheryl Mackey, M.B.A.
Melissa Comenduley '90
Lindsey Conley '13
Mr. Paul Conlin
Bryce Corbett '13
Mary and Chuck Corrigan
Kerwin and Laura Crane
Julianne Crawford '12
- David A. Crow '04
Ramon and Cynthia Cruz
Brian Cudiamat '96
Mr. and Mrs. David A. Cuka
Mr. John E. Czapllicki, Jr.
Maggie Daly '13
Logan Damiani '12 +
Christine Darabaris '13
Nancy and Robert Darnell
Jasmine Davila '13
Jennifer M. Davis '00
Daniel M. Dean '07
Trent Dela Riva '15
Dennis and Liz Delfert
Jenny E. Deller '94
Robert C. Denne
Pragasana Devaraj and Sukanya
Natarajan
Purva and David DeVoi
Grace Di Cecco '13
Harrison Dimmig '13
Mr. Jian Zhang and Mrs. Yuxian
Ding
Mr. and Mrs. Jignesh Dixit
Nicole Dixon '97 and Scott Dixon
Logan Dodd '13
Dr. Peter Dong
Mary Frances Dorn '05
Ed and Marcia Dowling
Gregory Draves '91
Don and Sharon Driscoll
Yangbo Du '08
Grace Duan '15
Mr. Jack and Mrs. Anna Duan
Danielle Ducharme '98
Merik Ducker '13
Sharon E. Duval '11 +
Jessica L. Dy-Johnson '02
Asher Edes '03
Victoria Ehle '98 and John A.
Ehle
Carrie (Giordano) Eklund '99
Mosab Elagha '13
Sarah E. Elliott '03
Kevin Emancipator '13
Eric Timothy Engelhard '96 and
Eva Bach Engelhard '96
Pat and Sharon Ervin
William Robert Erwin '11 +
Kenzo Esquivel '13
Victoria Etherton '13
Ms. Jean D. Evans
Fafara Family
Richie Fafara '13
Syed and Nariza Faheem *
James L. Faletti '94 and Debra
Faletti
Ruth and Dale Fast
Natasha Lynn Fast '98
Charles Christopher Felish '01
Justin L. Feng '11 +
Tian Feng and Baoyun Yin
Karissa F. Fernandez '08
Marissa A. Fierz '01
Dr. Cynthia R. Fischer
Kevin M. Flannery '04
Laura T.S. Foote '03
Scott and Jan Forler
Josh Fornek '13
Aaron Foss '99
Nikitta Foston
Daniel Francis '13
Don and JR Lee Francis
Laura Freund '01
Blanca and Miguel Garcia
Arjun Garg '13
Dhaval Garg '03
Michelle M. Garrison '93
Scott J. Garvin '98
Mr. and Mrs. James Gebis
Theresa L. Geiger '07
Colleen Geihm
- Jill Gengler '89
Mary and Rich Gentile
The Getz Family
Matthew Aaron Getz '03
Yvonne Gibson '98
Bonnie Min Gier '89
Mallory Giger '13
The Giger Family
Kurt Gimbel '93
Michael J. Gleeson '10
Mr. and Mrs. Anthony Glenn
Elyssa Glenn '13
Beatrice Go '13
Tiy Martin Goddard '95 and
Lynford Goddard
Margot and Bruce Goldsmith
Luis Gomez '13
Austin Gonzalez '13
Daniel and Yamilet Gonzalez
Ms. Nancy Gonzalez
Mr. Paul and Mrs. Linda Gottlieb
Rajesh Govindaiah '92
Vidya Govind-Thomas '09
Mr. Ron G. Green
Lee Groner
Sarah E. Grothen '04
Virgil and Wanita Grunkemeyer
Manu Gujrati '94
Krishna V. Gumidyalu '96
Maria R. Gunaratnam '95
Jin Guo
Ashima Gupta '13
Gaorav Gupta '96
Kaushal Gupta '92
Chris '90 and Beth '92 Hage *
Heather M. Haines '04
Daniel Hall '97 and Mienna Meek
Hall '97
James and Donna Hall *
Holly L. Hamilton '95 and
Anthony Hamilton
Mr. and Mrs. Wilbur R. Hansen
Nicholas Harker '05
Sadia T. Harper '96
Celeste Wright Harris
Bruce and Greta Hartman
Katie Havighorst '13
Erin Hawley '96 and Evan McRae
Paul Heaberlin '99
Douglas Heintz '00
Cheryl Heinz '89 and Family
Riley Helm '13
Edward Hennessy '90
Ion Hentea
Claire L. Herdeman '07
Rachel Lynn Hermes '13
Jose Hernandez '13
Fidel Herrera and Family
Larry and Deborah Herrman
Katrina Herrmann '01
Susan Heersema '93
Wesley Earl Herron '11
Miranda Herzog '12 +
Natasha Hill '99
Norman and Janel Hill
Tom and Diane Hinterlong
Alexandra Anne Hizer '10
Mark D. Hoadley '03
Heather Anne Hoff '07
Rae Dane Hohle '13
John R. Holmstrom '06
Gerrad A. Holtz '94
Kevin Hong '13
Chelsy Ann Hopper '92
Mr. Sean Hoskins
Derek A. Houston '98 and Jami
Lea Houston
Katherine Lorentzen Hove '01
Alisha G. Howell '04
Ivelina Hristova '13
Mr. Nacho Hristova and Mrs.
Mariya Hristova
- Dr. Alan Hsu '93
Feihong Hsu '98
Jennifer Huang '13
Jimmy Huang '13
Michael Keenan Huffington '99
Eric Nels Hultgren '08
Jessica Lynn Hunter '10
Seneca Hutson '13
Tan Huynh and Huong Nguyen
Joyce A. Hwu '03
Amarachi Ibe '13
Dr. and Mrs. Richard Ibe
Adam Ibrahim '13
David E. Ignacio '01
Erika Ignat '13
Dominic and Carrie Imburgia
Taylor Imburgia '13
Areto Imoukhuede '95
Juan Inton '98 and Rocío Inton
Matt Isoda '02
Amanda H. Jablonsky '04
Margaret Jacobs '93
Gabriel William Jacobson '04
Mr. and Mrs. Subbia
Jagannathan
Jesse T. Jang '02
Jinit and Pankti Jani
Julia Jennings '01
Eun Ji Jeong '13
The Jian Family
Yun Guo and Mingxiang Jiang
Glenn and Louise Johnson
Mathew and Alice Johnson
Morgan Johnson '13
Terry and Sue Johnson
Tim Johnson '03
Joanna (Messer) Jordan '97
Benjamin A. Jorns '03
Tejas Joshi '13
Drs. Srinivas and Vijayana
Jujjavarapu
Gina Jung '13
William and Barbara Jung
Mr. Sudhir and Mrs. Kavitha
Kallu
Sunjay Karan and Kanchan Mala
Kaylee Karumanchi '13
Connor Kasch '13
Kauffman Family
Kaylee Kauffman '13
Samuel Kaufman '13
Vivasvat Kaul '03
John and Kristin Kazenas
Ryan '93 and Aimee Keeney
Andrew Joseph Keller '05
Akash Kesari '13
Ravi K. Kesari '07
Elizabeth Darr Keserauskis '94
Emil Khabiboulline '12 +
Akram Khaja '13
Arshia Khan '01 and Jeremy R.
Boyens
Mohammed and Rubina Khan
Elaine C. Khoong '03
Mr. John and Mrs. Kathleen
Kiener
Grace Audrey Kim '97
Ms. Jinsook Kim
Monica Kim '13
Kathryn Kim '13
Melissa Kim '13
Nicholas Kim '03
Sue Kim '13
Keith Kimberling '13
Tamora Kimmitt '91
Toshio Kimura '95
Mr. and Mrs. Mark T. Kinder
Susan M. King '01 and Oliver
King
David '95 and Amy '95 Kinney
Pirapat Kitipongpatana '14
Tiffany D. Kitto '90
- David H. Klempner '02
Christen Klochan '99
Chris Knowlton '03
Catherine Ko '07
Tanya E. Kobyluk '91 *
Jonathan Koch '08
Vivek Koganti '13
Gerry and Marian Kopay *
Ankur Kothari '97 and Guinevere
Kothari *
Brooke Kottkamp '13
Mr. and Mrs. Jerzy Kowal
Lauren R. Kozak '01
Neil T. Krasovec '92 and Mila
Krasovec
Ms. Dorothy Krett
JaEun Ku and Yoon Lee
Anusha Kumar '10
Dipen Kumar '13
Mr. and Mrs. Krishna Kumar
Nishita Kumar '13
Sharad S. Kumar '05
Sunder Kumar and Seema
Sodhi
Mr. Kevin J. Kunstman
Vishnu Kurella '98
Shannon Kurian '13
Mark Kuruc
Shannon Kuruc '13
Joonil Kwak '01
Kaska Kwiecien '13
Mr. and Mrs. Jerry Kwiecien
Ben Lai '99
Joshua Lam '13
Ming-Long and Gina Lam
Lawrence and Valerie Lambe
Elizabeth N. Lampe '02
Elissa Larkin '99
H.V. Ted and Sara Larkin
Tammy Larson
Sabrina Lato '13
Branson Scott Lawrence '02
A. Leahy
Clare Leahy '13
Mia Leckie '13
Andrew Lee '10
Jenny Lee '13
Christy Lee '92
Jeanne Lee, M.D. '03
Jenny Lee '13
Mr. King Ching Lee and Ms.
Soming Lee
Adam J. Leemans '09
Linda Leslie
Leung Family
Jennifer F. Levin '01
Samantha J. Levin '12 +
Stephanie L. Lewis '02
Grace Li '13
Shelly Li '13
Amy Li '04
Claire Liang '13
Kevin Lim
Jason Lin '13
Sharon S. Lin '95
Emily Lindgren '13
Brian A. Link '03
Sarah Lisk '12+
Dr. Thomas and Mrs. Pamela
Lisk
Christine Liu '13
Mr. and Mrs. Chuan S. Liu
Rebecca S. Liu '02
Andrea Llenos '00
Hweimin Valerie Lo
David Lockhart, Jr. '90
Kelly and Brad Lofgren
Itzel Lopez '13
Bin Lou

(Continued on next page)

(Continued from previous page)

- Lily Lou '13
Wen-Ming Louh and Jenny Chang
David and C.J. Love
Joshua Love '13
Heidi Lu '03
Lucy Lu '01
Peter Lu '12 +
Zouyan Lu '02
Yuhua Luo and Can Gong
The Birmingham-Luther Family
Terry and Rick Luther
Corinne A. Madsen '11 +
Chelsea Lynn '02 and Erin Maiero
Alexa Maffei '13
Raymond A. Magee, Jr. '01
Amanda Magyar '13
Wanda Mahoney '93
Fernando and Matilde Maldonado
Kathleen Theresa Malinowski '03
Jenna Maloka '05
Nolan Maloney '12 +
Siri Manam '13
Greg M. Manning '89
Anuj Marathe '13
Barry Marks and Nancy Sage
Sue Marr '90 and Travis Marr
Mr. Jozef and Mrs. Elizabeth Marszalik
Lisa Martin
Sarah Martin '13
Stephanie Martinez '10
Viviana Martinez '00
Kyson Joseph Mathieu '08
Mr. and Mrs. Shaji Matthews
Trisha Youngquist Maurer '98
Tiffany Mayo-Chambers '99
Susan G. McAdams '89 and Kevin B. McAdams
Mr. Caryl McCaulou
Kristi and Michael McCaulou
Erica McEvoy '99
David and Monica McGovern
Kevin and Mary McGregor
John and Leslie McGuire
John Mcguire '13
Ms. Kathleer T. McHugh
Ian S. McInerney '11
William Keith McIntosh
Cynthia (Westphal) McKendall '92
John and Beverly McKeown
Deckle and Pamela McLean
Caitlin McMahan
Sarah L. McPike '07
Antonio Medina and Monica Segura
Dawn Meisenheimer
Mary Mench
Anthony Mercado '13
Chet and Hilda Meyer
Eva Marie Meyer '13
Katja Meyer '98
Linda E. Meyer
Timothy I. Meyer '92 and Emily E. Hostetter '92
Jack Michuda '13
Ms. Kerby L. Mickelson
Ms. Erin Micklo
Hannah Miller '12 +
Mike and Renita Miller *
Sean Miller '03
Jill Mitchell '89
Dr. and Mrs. Amlan Mitra
Ashwin Mitra '13
Prabhat and Shiva Mittal
Jessica Mo '13
Mr. and Mrs. Vinod N. Mody
Tahir Mohideen '13
Masum Momaya '95
Bertha A. Montoya
Camille Moore '98
Carrie and Kurt Moranz
Mr. and Mrs. James F. Morgan
Tiffany A. Morgan '00
Nicholas P. Morley '00
Robert Morphis and Heidi Hietanen
Kevin and Jennifer Morris
Mallory Arnell Morris '02
Stanley Morris
Allison Morrow '11
Luke S. Moryl '07
Nicholas H. Moryl '03
Mr. Robert and Mrs. Clara Moses
William and Luann Moth
Mr. Narendar and Mrs. Savita Mothkur
Kyle Mou '13
Ann Catherine Mountz '92 and Chuck Mountz
Mr. and Mrs. Gary K. Mui
Eric Franklin Mulch, Esq. '98 and Beth Ebenstein Mulch
Rebecca Joan Mundell '92
Kirti Munjeti '13
Dr. Kate Murray '99 and Charlie Corrigan '99*
Zsolt Nadas '99
Kyle Pierce Naff '01
Vamsikrishna Naidu '13
Darshana Nair '05
Dr. Sangjeong Nam and Ms. Seongyeon Cho
Akhiil Narang '00
Vishesh Narayan '00
Scott Narimatsu '95
Jean Catherine Near-Ansari '91 and Naveed Near-Ansari
Andrew William Nelson '09
Ms. Marilyn K. Nelson
Mr. and Mrs. New
Donielle N. Newell '00
Mr. Sonny Nguyen and Mrs. Cham Tran
Sharnique Nichols '93
Dalia Nilles
Mr. Fernando Noriega and Mrs. Jacinta Theobald
Christopher Norris '13
Sydney K. Null '03
Dr. Luis Núñez
Melissa O'Brien '11
Ocola Family
Benedicta Ojibah '13
Georgianne Oman
Patricia Oman '96
Birce Onal '08
Eric Ordóñez '12
The O'Reilly Family
Amy Leigh Orsborn '03
Gary and Cindy Orwig
Mr. and Mrs. Thomas Ott
Sue E. Ouellette
Skip and Peggy Palenik
Daniel and Sylvia Pape
Deokgeun Park '12
Hae Jung Park
David Park '13
Drs. Yonghan and Helena Park
Ashok and Neelima Paruchuri
Susan Pasnick '96 and Jake Brinton
Jeff Pasqualucci '00
Bindi Patel '13
Dhruv Patel '13
Sameer Patel '92
Shivani Patel '13
Viveka Patel '13
Bruce and Sue Paterson
Keeva H. Payne '02
Vanessa C. Pentangelo '02 and Anthony Pentangelo
Sandy Perez '13
Mr. and Mrs. Ventura Perez
David Perkins '97
Toni Petersen
Mikayla Petesch '13
Scott Pfister '89
Jamie Pflasterer '94
Joseph Phan '05
Agnel Philip '13
Robert and Kathy Phillips
Zoe Phillips '13
Sophia Pilipchuk '08
Andrew Pipathsouk '06 +
Alexandra Plattos '07
Mr. Donald Pleas
Patrick Sullivan Polk '01
Arthur J. Pope, Ph.D. '01
Atene Sotera Poskute '14
Donald and Michelle Potempa
Jen Poulsen '03 and Joe Bagley
Douglas Pratt '97 and Erin Skene-Pratt
Rep. and Mrs. Robert W. Pritchard
Dwan Lamar Prude '97 and LaChelle Dione Prude
Mr. Andrew and Mrs. Julia Pusey
David Qasem '05
Mr. Ang Qian and Ms. Qianlu Li
Jorge Quero '12
Irfan A. Qureshi '94
Ashley Radee '13
Kyle B. Rader '04
Vishaka Raguveer '06
Alexandra Sasha Rahlín '04
David H. Raileanu '04
Vijay Rajagopal '99
Kenneth Rakers
Kavita L. Ramakrishnan '03
Uriel Ramirez '13
Venkat Rangachari
Saieesh Rao '13
Deborah Linksvayer Rash '94 and John Rash
Brooke Ray '13
Srinivas and Manjula Reddy
Mr. and Mrs. Raymond Reinke
Anna Remis '97
Paul and Vicki Remy
Jennifer Ren '13
Gemilo V. Resaba, Jr. '00
Megan Reynolds '98
Monica (Radosevich) Reynolds '04
Scott and Sherry Reynolds
Maria M. Rhodes '96
Tony and Angela Richardson
Tony A. Rippy '93 and Mary Catherine Rippy
Shailushi Baxi Ritchie '94
Sabrina Roberts '13
Mrs. Jennifer Roberts-Puralesk and Mr. Daniel Puraleski
Lucinda Roberts-Rehfeldt '90
Sheri D. Robinson '93
Mr. and Mrs. David Rock
Mr. and Mrs. Brian Roderick
Matthew '00, Timothy '03, & Jennifer '09 Roderick
Jenny Roderick '09
Matthew Roderick '00
Aimee Wilczynski Rodriguez '99
Frank and Elisabeth Rogers
Michelle A. Rogers '06
Andrea Ronkowski '00
Reborta and Don Rosenberg
Noah Rosenberg '93
Paul Andrew Ross '97
Aldo M. Rossi '10
Isolina R. Rossi '10
Magda and George Roth
Mr. and Mrs. Peter Rotskoff
Russell and Karen Rudd
Alison Ruddy '01
Michelle Rudolph '10
Thomas and Sandra Rueger
Ben Rugg '99
Sandy and Ken Ruksakiati
Ken and Lisa Runkle
Natalie Runkle '13
Mrs. Karen Ruscitti
Savanna Rutas '13
Virginia Kathleen Ryan, J.D. '98 and Kathleen Theresa Hentsch
Joseph Sachleben and Nighth Razvi
Kavitha Sagi '98
Greta and Erney Salamando
Chuck '93 and Lisa Saletta
Sidra Salman '13
Ricardo Sanchez and Alicia Jimenez
Sarah Sanders '01
Murali and Shailaja Santhanam
Antonia Sargeant '99
Allison S. Sass '90 and Christian Sass
Justin Sass '13
Elizabeth Schaefer '97
David and Kristi Schell
Erin '02 and Kevin '02 Schlee
Randy Schlesinger
Christian and Paula Schmidling
Hannah E. Schmitt '10
Madison Schroeder '13
Scott and Jolene Schroeder
Jean M. Schubert
Jeannine Schulz '12 +
Robert Schurz '13
Evan Schwerbrock '10
Devin Scott '13
Sarah Scott '97
Shawn '91 and Amanda Scott
Christopher M. Sedlack '92
Margot Seigle '05
Priya Sekar '92
Alexander P. Serrano '04
Carrie Sha '13
Ankur H. Shah '94 and Marissa Rubio
Mehal Shah '11 +
Rupen and Bindu Shah
Urvi Shah '03
David and Rebecca '02 Shane
Joan Shang '13
Kevin T. Sharp '04
Richard Shen '13
Dr. Xiaofa Shi and Mrs. Chunyun Liu
Jack Shi '11
Rae Shih '06
Dr. and Mrs. Deepak Shukla
Navika Shukla '13
Maximiliano Silvestre '06
Bailey Simmons-Brown '15
Daniel Brian Sinars '92 and Cindy Renee Sinars
Ravi K. Singh '95
Ben '93 and Kelly Siron
Ross Skelly '13
Kyle Skoog '12 +
Maura Slattery '13
Robert and Cathlene Slowikowski
Glen and Sandra Smith
Sharon Smith '92
Cliff '92 and Jen Sodergren
Kalyani Sonarika '13
Hyun Jin Song '12
Lynn Sosa-Bergeron '94
Samantha E. Spalding '06
Eric and Michelle Sparks
Megan Leigh Spencer '98
Maya Srikanth '00
Srbislav and Marija Stancov
Mrs. Kimberly Steele
Jeffrey M. Strang '91
Alexander Stratton '13
Wendy and Tom Stratton
Karolyn Stromdahl '13
Michael Stukel '00
Nathan Suek '13
Mary Elizabeth Sullivan '01
Stephanie Sullivan '03
Bledi and Kelly (McArdle) '01 Sulo
Laurie Sutherland
Sherry Sutphen
Christopher Swan '96
Katerina A. Swanson '96
Hannah Swerbenski '13
Trinh and Lien Ta
Heather Taff '04
Adekore Taiwo '13
Arjun Tambe '13
Lee Tang '13
Van T. Tang '95
Monty and Patrice Tarr
Alistair K. Templeton '96
Matthew Tennenhouse '13
Robert and Denise Thain
Lou and Mary Theodor
Lloyd and Madeline Thieman
Angelika Thomas
Mr. and Mrs. Leonard Timm
Lucas H. Ting '03
Brendan Todd '02
Bharath Tolappa
Marge Tomasik
Sydney Tomasko '13
Andrew Torres '98
Jennifer LeClair Townsend '06
John and Jennifer Trewitt
Riva Trivedi '13
Jeff Truitt '89
Mr. Dennis Tsai
Derrick K. Tung '98
Dr. and Mrs. Bruce Unterman
Joshua Unterman '97
Gaurav A. Upadhyay '96 and Smita Singh
Vaibhav Upadhyay '03
Jennifer Lanette Urbauer-Parsons '98 and Jeremy A. Parsons
Mr. and Mrs. Antonio C. Valero
Drew Van Pelt '98
Vanessa R. Vardon '02
Rohan Verma '13
Rheanna Vimawala '13
Hera C. Vlamakis '94
Erik Volkman '03
Heidi VonDeBur '13
Mark and Deb VonDeBur
Anisha Vyas '09 and Sonam Vyas '12
Anil R. Wadhvani '07
Nisha Wadhvani '04
Caitlin Walczyk '13
Samuel Walder '13
Chris and Grace Walquist
Christopher Walsh and Ellen Kaplowitz
Dean and Nancy Walsh
Mark and Sari Wancket
David Xiwen Wang '13
Gary Wang '11
James Z. Wang '03
Jeffrey H. Wang, M.D. '96
John Jian Wang '10

Kenny Wang '11 +
Lucy Wang '13
Leo K. Wang '94 and Irma Wang
Ryan Yuan Wang '08
Yuanhao Wang '13
Henry Ward '13
Dr. Jesse and Mrs. Brid
Wardlow
Alan Michael Ware '02
Aditi Warhekar '13
Heidi Warning '13
Joe and Deb Warning Family
Jonathan P. Warnock '02
Karen (Beilsmith) Warren '90
Karna Warrior '11 +
Ashley Washington '13
Joseph and Rachel Washington
Daniel Wenny and Wendy
Gibbons
Malia Wenny '13
Bayly Wheeler '00
Anita White
Jessica (Peterson) White '94
and Nathan White

Charles Whittaker '07
Walter and Denise Wiebe
Ellen Weiss Wiewel '97 and
David Ian Sacks
Michael Connor White '12 +
Jaime Erin Devereaux Wiley '98
Ian Wilkinson '13
Matthew Williams '13
Rebecca Williams '03
Sebastian Williams and Karen
Ray Williams
Jonathan Wilson '96
Michael R. Wilson '94
Wilson Hall
Arthur Wojtowicz Wit '02
Jason Wong '92
Grace Woo '02
Sarah L. Woolsey '89
Lori Brinkmann Worledge '90
Mr. and Mrs. Gregg Worrell
Ethan Wozniak '99
Brent Wu '13
Megan Wu '11+
Rebecca Wu '13

Summer Wu '13
Mr. Wei Wu and Ms. Guanhua
Qian
Linda J. Wylder
David S. Xu '04
Anita Xue '04
Danny Yagan '02
Keiko and Shinpei Yamakawa
Sean Yamakawa '13
Amy Weiran Yan '02
Dunping Yang '04
Kevin Yang '02
Ying (Amy) Ye '05
Emilie T. Yeh '06
Andy Yeager '13
Theodore Yeh '07
Hyun Yeo
Satya Yerrabolu '13
Mark, Susan and Taylor '12
Yost +
Mr. Steve Zant
Elizabeth Jane Zaretsky '10
Earl I. Zaromb '95
Robert Michael Zedric '08
Emily L. Zeissler '01
Rocio Zepeda
Jennifer J. Zhang '13
Kevin Zhang '13
Spencer Zhang '06
Yi Zhang '13
Jeffrey Zhao '13
Ivan Zlatanov '13

Endowment Donors

Leo Burnett Company, Inc.
Lloyd A. Fry Foundation
Bob, Margaret, Connor,
Molly and Erin Hernandez

Viviana Martinez '00
Paul and Judy Milano
Michael Suh '97

Gift-in-Kind Contributions

FY13 Gift-in-Kind Contributions

GoPicnic Brands
Mark Kammrath

Paul and Judy Milano

While we carefully prepare the donor lists, we recognize that errors may have occurred. Please accept our apology if your name is not properly represented and contact the Development Office at (630) 907-5040 or giving@imsa.edu so that our records can be corrected.

THANK YOU!

Leadership Giving

Gifts were received from the following individuals who served on one of the Academy's leadership boards during the 2012-2013 fiscal year.

Legend: ¹ IMSA Board of Trustees
² IMSA Fund Board of Directors
³ IMSA Alumni Association Cabinet
⁴ Parent Association Council Executive Committee

Donors serving on an IMSA Board in FY13:

Melvin Bacani '90³
Pamela O. Blackwell²
Dr. Jerome (Jay) Budzik '95¹
Samuel Berger '07³
Kapil Chaudhary²
Angela P. Chen '93³
Kevin Colby '95³
Melissa Comenduley '90³
Scott Crawford²
Martin (Marty) J. DiMarzio '95²
Julie Dowling '99³
Regina P. Ethernath⁴
Vanessa Gage '95²
JuliAnn Geldner, J.D.⁴
Bonnie Min Gier³

Jenifer Giger⁴
Sheila MB Griffin¹
Kathy He¹
Dr. Cheryl Heinz '89³
Ross Hemphill²
John Hoesley '89²
Eric Nels Hultgren '08³
Matt Isoda '02³
Dr. Steven T. Isoye¹
Leslie Jubby¹
Dr. Mary Kalantzis¹
Dr. C. Ronald Kimberling⁴
Amy Kinney '95³
Dr. Jordan Koss '89²
Dr. Vasu Kulkarni²
Jayashree Kumar⁴
Nicholas S. Lilovich '04³

Ipsita Mahapatra⁴
Dr. Stephanie Pace Marshall²
John (Jack) McEachern, Jr.¹
Roger Moore⁴
Tiffany A. Morgan '00³
Dr. Dan Mueth '90²
Amanda Murphay³
Joe Nolan²
Dr. Luis Núñez¹
Dr. Paula Olszewski-Kubilius¹
Jacob R. Plummer '96²
E. Glenn Rippe²
Dr. Erin W. Roche '89¹
Dr. Marsha R. Rosner¹
Brian Seby³
Michael Suh '97²
Winn W. Wasson '01³

Tributes & Memorials

Tributes are designed for a variety of uses at IMSA, yet they all have a shared purpose – to memorialize or honor a family member, friend, colleague or group.

Gifts were received in loving memory of:

Brittany Burash '12
Dr. Stephen Ungso Choi
Susan Croll, mother of
Andrea Croll '97
Dr. Jose (Gerry) Fernandez
Charles David Goldstein
for CADHA
Bernard C. Hollister
Gail Lieberman
Julie Y. Namkung '91
Pamela Pope, mother of
Arthur Pope '01
Scott Swanson '90
Prahlad Thacker, father
of Anil Thacker
Mary Van Verst
Colin Woods '08
Scott D. Zager '06

Gifts were received in honor of:

Pooja Agarwal '01
and Chuck Rickert '98
Titu Andreescu
Dr. Sowmya Anjur
Sra. Maria Atienza-Gabas
Lindsey Banjavcic-Owen '06
Vicki Burgholzer
Margaret Cain
Dr. Jeong Choe
Marie Cerny
Dr. Steven Condie
Marjorie Donath
Dr. Peter Dong

Ruth Dover
William Gentzler
Jim Gerry
Dr. Dan Gleason
Bonnie Min Gier '89
Ethan Gordon '13
Dr. Eric Hawker
Carl Heine
Rae Hohle '13
Dr. Robert Kiely
Dr. Leah Kind
Herbert B. Knight
Branson Lawrence
David Lundgren
Dr. Glenn W. "Max" McGee
Eric McLaren
Eric and Kim McLaren
Barbara Miller
Daniel Montgomery '06
Dr. Christian Nokkentved
Jose Palos
Dr. Pat Patankar
Dr. Don Porzio
Emily Rader '15
Dr. Aracelys Rios
Sandy Ruksakiati
Deb Scarano
Brooke Schmidt
Clay Sewell
Dr. Eric Smith
Tracy Townsend
Cathy Veal
Dr. James Victory
Lynn Miller Wancket '99
and David Johnson '00

Alumni

Donor Recognition

By Class Year

Class of 1989

(23% participation)

Anonymous (2)
 Anna Feltes Aquino
 Rebecca L. Arnal
 Laura Brady
 Chris Caruso
 George L. Chadderdon
 Dr. Arnold D. Chung
 Steven Edward Collins
 Ray Dames
 Sophia Davenport
 Amy Downey
 John W. Ellingson
 Kurt Ewen
 Dan Frakes
 Jill Gengler
 Rick Gimbel
 Mitchell Gordon
 Wendy Hansen-Smith
 Cheryl Heinz
 John Hoesley
 David Joerg
 Karen T. Kiener
 Stan Kim
 Jordan Miles Koss
 David Kung
 Greg M. Manning
 Susan G. McAdams
 Jill Mitchell
 Andrew Oh
 Scott Pfister
 David Reed
 Dawn Marie Reed
 Badri Rengarajan
 Erin Roche
 Erik Rothbaum
 Mark A. Smith
 Amy Courtin Sohl
 Jeff Truitt
 Sarah L. Woolsey
 A. Clay Young

Class of 1990

(24% participation)

Anonymous (1)
 PJ Alfrejd
 Melvin Bacani
 Jim Begley
 Joanna Black
 John Bozarth
 Mike J. Brown
 Melissa Comenduley
 Daniel DeUgarte
 Michele Jonsson Funk
 Chris Hage
 Dr. Katherine M. Hashimoto
 Edward Hennessy
 Michele Jonsson Funk
 Tiffany D. Kitto
 Ada Kumar
 Tanya Leinicke
 David Lockhart, Jr.
 Elizabeth Malecha
 Sue Marr
 Robin May-Davis
 Vijay S. Menon
 Dan Mueth
 Laurel Nolen

Jason Orloff
 Sendhil Revuluri
 Jason Ribando
 Lucinda Roberts-Rehfeldt
 Allison S. Sass
 Kelly Wojcik Smith
 Andrea Stonecipher
 Gabe Suarez
 Adam Taylor
 Richard Tsai
 Aimee Walter
 Karen (Beilsmith) Warren
 Alice C. Watson
 Lori Brinkmann Worledge

Class of 1991

(19% participation)

Anonymous (2)
 Purusharth Agrawal
 Ryan Anderson
 Thao Anderson
 Joseph Bonomo
 Daihung Do
 Gregory Draves
 Trisha Jung
 Joe Kestel
 Jason H. Kim
 Tamora Kimmitt
 Tanya E. Kobyluk
 Austin Krumpfes
 Jon-Paul Leduc
 Sandy Lux
 Emily A. Mellott
 Jean Catherine Near-Ansari
 Rajan Rajbhandari
 Kurt Revis
 Shawn Scott
 Jeffrey M. Strang
 Suzanne Weber, M.D.

Class of 1992

(20% participation)

Christopher Beck
 Rachel Benoit
 Rajesh Govindaiah
 Gretchen E. Green, M.D., M.M.S.
 Kaushal Gupta
 Beth Hage
 Tim Harms
 Michelle Hart
 Chelsy Ann Hopper
 Emily E. Hostetter
 Elizabeth Kinsella
 Neil T. Krasovec
 Daniel Lee
 Christy Lee
 Aaron Lieber
 Cynthia (Westphal) McKendall
 Parthiv Mehta
 Timothy I. Meyer
 Ann Catherine Mountz
 Rebecca Joan Mundell
 Joy R. Ott
 Sameer Patel
 Eric R. Quinn
 Christopher M. Sedlack
 Priya Sekar
 Juris Shibayama
 Daniel Brian Sinars

Sharon Smith
 Cliff Sodergren
 Adam M. Theros
 Glenys A. Thorstenson
 Richard R. Tung
 Jason Wong
 Lisa Wu

Class of 1993

(23% participation)

Anonymous (1)
 Alaina M. Anderson
 Andrew Beaver
 Joe Beda
 Leah Berman Williams
 Gabriel L. Black
 Barbara A. Buchthal
 Christopher C. Burke
 Jen Cha
 Angela P. Chen
 Ann Chen
 Frederick W. Chen
 Elizabeth Chung
 Steve Crutchfield
 Brian Etscheid
 Michelle M. Garrison
 Kurt Gimbel
 Dr. Benjamin Gold
 Matt Groch
 Susan Heersema
 Matthew J. Holliman
 Matthew G. Horr
 Dr. Alan Hsu
 Jesse Hsu
 Vanessa Hughes
 August Jackson
 Margaret Jacobs
 Ryan Keeney
 Alok Khuntia
 Michael H. Kim
 David A. Knol
 Apinya Lertratanakul
 Jet-Sun Lin
 Wanda Mahoney
 Tarun Nagpal
 Sharnique Nichols
 Renee Pazdan
 Matt Pritchard
 Tony A. Rippey
 Sheri D. Robinson
 Noah Rosenberg
 Chuck Saletta
 Ben Siron
 Ray Stadt
 Eric F. Stuckey
 Adam M. Theros
 Suchon Tuly
 Richard R. Tung
 Matt Unterman
 Claire C. Wang, M.D.

Class of 1995

(22% participation)

Karen Ballinger
 Jerome Budzik
 Kevin Colby
 Marty DiMarzio
 Anne Elliott
 Anthony Engel
 Heidi Engel
 Vanessa Gage
 Jake M. Gerstein
 Tiyy Martin Goddard
 Maria R. Gunaratnam
 Holly L. Hamilton
 Morgan Hawker
 Areto Imoukhuede
 Kraig Jakobsen
 Cliff S. Kane
 Eric J. Keller
 Francis N. Kim
 Toshio Kimura
 Anne L. Kinderman
 Amy Kinney
 David Kinney
 Melanie S. Kotys
 Kurt Krukenberg
 Sharon S. Lin
 Maura E. McLaughlin
 Masum Momaya
 Justus Morris
 Scott Narimatsu
 William Paterson
 Charu Ramaprasad

Class of 1994

(25% participation)

Anonymous (4)
 Roberta Joy Anderson
 Chris Andreoli
 Pramod Atluri
 Richard W. Bergstrom, Jr.
 Julia de Caradeuc Bernd

Brad Boyer
 Jennifer Chapin
 Ernest Chu
 Kevin T. Chu, Ph.D.
 Peter Zhe Chu
 Dr. Arnold D. Chung
 Jenny E. Deller
 Liza Escudro
 Rita Etscheid
 James L. Faletti
 Peter Fang
 Brian M. Grunkemeyer
 Manu Gujrati
 Gerrad A. Holtz
 Eric N. Johnson
 Elizabeth Darr Keserauskis
 Rajesh Keswani
 Han Y. Kim
 Takayuki Kohata
 Jason Krebs
 Patrick Kutz
 Demmaree Lilley Li
 Alan Magerkurth
 Mia K. Markey
 Darshan H. Mehta
 Winjie Tang Miao
 Ash Morgan
 Andrea (Lauterbach) Myers
 John Nelson
 Lucas Pain
 Matthew R. Pearl
 Jamie Pfisterer
 Irfan A. Qureshi
 Karen Rakers-Dowd
 Deborah Linksvayer Rash
 Shailushi Baxi Ritchie
 Ankur H. Shah
 Lynn Sosa-Bergeron
 Paul Strasma
 George W. Su
 Hera C. Vlamakis
 Leo K. Wang
 Raymond Wee
 Jessica (Peterson) White
 Damian M. Wiest
 Michael R. Wilson

Megan L. (Mandernach) Shober
 Ravi K. Singh
 Patricia A. Sullivan
 Van T. Tang
 Dr. Deepti Tolia
 Jessica Droste Yagan
 Sam D. Yagan
 Anna Yusim
 Earl I. Zaromb

Class of 1996

(23% participation)

Yaw B. Agyemang
 Jeanine M. Batterton
 Christopher J. Berry
 Jonathan Booth
 Kathleen (Ervin) Booth
 Michael H. Brody
 Sara A. Carson
 Mary P. Carter
 Andrew Dali Chen
 Audrey M. Chen
 Nina Chinosornvatana
 Julia Colby
 Brian Cudiamat
 Laura Dabbish
 Jaime L. Eigner
 Eric Timothy Engelhard
 Eva Bach Engelhard
 Brad Friedman
 Irene Friedman
 Thomas J. Gower
 Krishna V. Gumidyala
 Gaorav Gupta
 Sadia T. Harper
 Erin Hawley
 Matt Hellige
 David Kang
 Vijay Karunamurthy
 David Byung Min
 Brian Mirous
 Patricia Oman
 Susan Pasnick
 Jacob R. Plummer
 Maria M. Rhodes
 Brian A. Sebbly
 Amanda Leonard Shanbaum
 Meredith Shaw
 Christopher Swan
 Katerina A. Swanson
 Alistair K. Templeton
 Gaurav A. Upadhyay
 Jared Wadsworth
 Jeffrey H. Wang, M.D.
 Jonathan Wilson
 Jason Yang

Class of 1997

(19% participation)

Anonymous (2)
 Jacob Ament
 Michelle Anderson
 Charles Ballowe
 Lisa M. Chambers
 Crystal T. Clark
 Elizabeth Cohen
 Nicole Dixon
 Katie Duncker
 Katlyn Jie Gao
 Benjamin Gertzfield
 Neal Groothuis
 Daniel Hall
 Mienna Meek Hall
 Andrea Hong
 Avery Hoppa
 Reginald Jackson
 Joanna (Messer) Jordan
 Grace Audrey Kim
 Ankur Kothari
 Amanda (De Zutter) Kotlyar

Andrea (Croll) Ngola
David Perkins
Douglas Pratt
Dwan LaMar Prude
Michael A. Quick
Andrew Raatjes
John B. Randall
Ranjeet Rao
Anna Remis
Paul Andrew Ross
Elizabeth Schaefer
Sarah Scott
David Chen-yu Shih
Erin Stone
Michael Suh
Christopher T. Sukhaphadhana
Joshua Unterman
Ellen Weiss Wiewel
Gus Xinon
Matt Zanon

Class of 1998

(22% participation)

Anonymous (2)
Peter Adamczyk
Sachin D. Agarwal
P.J. Balin-Watkins
Karen Chesley
Julie Comerford
Anand Dash
Danielle Ducharme
Victoria Ehle
Natasha Lynn Fast
Scott J. Garvin
Yvonne Gibson
Derek A. Houston
Feihong Hsu
Juan Inton
Dana Johnson
Thomas Johnson
Tashil Ju
Alice Kim
Juhee Kim
Vishnu Kurella
Lucinda Lawson
Rebecca Machalow
Patri Marconi
Trisha Youngquist Maurer
John Philip McFerrin
Amy Patricia Meek
Katja Meyer
Camille Moore
Matt Mowers
Eric Franklin Mulch, Esq
Kelly Jean Rabin
Megan Reynolds
Chuck Rickert
Virginia Kathleen Ryan, J.D.
Kavitha Sagi
Barry Schnorr
Megan Leigh Spencer
Andrew Torres
Derrick K. Tung
Jennifer Lanette Urbauer-Parsons
Drew Van Pelt
Jaime Erin Devereaux Wiley

Class of 1999

(21% participation)

Jessica (Yokley) Brand
Michael Patrick Comerford
Charlie Corrigan
Julie Dowling
Carrie (Giordano) Eklund
James Wilcox Ethington
Anne Catherine Feltoch
Aaron Foss
Paul Heaberlin
Jonathan Helm

Natasha Hill
Michael Keenan Huffington
Miyam Jankov
Jane Jih
Brian Kambach
Christen Klochan
Terry Koo
Ben Lai
Elissa Larkin
Nathaniel C. Leung
Tiffany Mayo-Chambers
Erica McEvoy
Dr. Kate Murray
Zsolt Nadas
Maria Pacana
Vijay Rajagopal
Stacey Resetar Mowers
Aimee Wilczynski Rodriguez
Ben Rugg
Davender Sahota
Antonia Sargeant
Brandon Schlesinger
Jason W. Siefferman
Marina Sivilay
Irene Sofil
Aaron Thompson
Amanda V. Wozniak
Ethan Wozniak
Marisa Zuskar

Class of 2000

(17% participation)

Margaret J. Anderson
Christine Banek
Kent Borecky
Nicole Brown
Jason Victor Chang
Sylvie Chau
Henry Milton Chu
Kevin Clair
Vanessa H. Clark
Jennifer M. Davis
Julie May Eng
Kevin Andrew Hall
Douglas Heintz
Andrew Hoesley
Radhika K. Joag
Anjali Johnson
Andrea Llenos
Viviana Martinez
Jessica McAlear
Timothy A. Messer
Tiffany A. Morgan
Nicholas P. Morley
Akhil Narang
Vishesh Narayan
Donielle N. Newell
Stephen Paige
Aaron Parness
Jeff Pasqualucci
Christina L. Prested
Gemilo V. Resaba, Jr.
Matthew Roderick
Andrea Ronkowski
Maya Srikanth
Michael Stukel
Bayly Wheeler

Class of 2001

(16% participation)

Anonymous (1)
John Frederick Bart Addison
Pooja K. Agarwal
Nikhil Agarwal
Jason Barnes
Megan Fast
Charles Christopher Felish
Marissa A. Fierz
Laura Freund
Wendy Melissa Gable

Matthew Hall
Katrina Herrmann
Katherine Lorentzen Hove
David E. Ignacio
Stacia Ilchena
Julia Jennings
Judy H. Kang
Arshia Khan
Kathleen A. King
Susan M. King
Lauren R. Kozak
Joonil Kwak
Ivan Young Lee
Jennifer F. Levin
Lucy Lu
Raymond A. Magee, Jr.
Kyle Pierce Naff
Brian Park
Connie Jung Park M.D.
Patrick Sullivan Polk
Arthur J. Pope, Ph.D.
Shaun Alan Roach
Thomas Rooney
Alison Ruddy
Sarah Sanders
Polina A. Segalova, Ph.D.
Mary Elizabeth Sullivan
Kelly (McArdle) Sulo
Sarah Warning
Winn W. Wasson
Emily L. Zeissler

Class of 2002

(20% participation)

Diana Tung Barnes
Amanda S. Besinger
Justin Edward Blanchard
Catherine Breckenridge
Yong Chen
Nathaniel S. Covert
Mykal Dortch
Jessica L. Dy-Johnson
Matt Isoda
Jesse T. Jang
David H. Klemptner
Elizabeth N. Lampe
Andrew Blake Langan
Branson Scott Lawrence
Stephanie L. Lewis
Rebecca S. Liu
Zouyan Lu
Chelsea Lynn Maiero
Jennifer Mo
Mallory Arnell Morris
Keeva H. Payne
Lynn Qin-lin Peng
Vanessa C. Pentangelo
Minji Ro
Erin Schlee
Kevin Schlee
Jessica R. Senning
Rebecca Shane
Brendan Todd
Vanessa R. Vardon
Alan Michael Ware
Jonathan P. Warnock
Tiffany White
Arthur Wojtowicz Wit
Grace Woo
Danny Yagan
Amy Weiran Yan
Kevin Yang

Class of 2004

(15% participation)

Anonymous (2)
Amanda J. Adeleye
Steven P. Benario
Kora Bongen
Emily I. Coleman
David A. Crow
Kevin M. Flannery
Jacob Foster
Sarah E. Grothen
Heather M. Haines
Alisha G. Howell
Matthew M. Ito
Amanda H. Jablonsky
Gabriel William Jacobson
Ruozhou Jia
Garry James Kennebrew, Jr.
Amy Li
Nicholas S. Lilovich
Aubrey E. Lutz
Mikin Patel
Kyle B. Rader
Alexandra Sasha Rahlin
David H. Raileanu
Monica (Radosevich) Reynolds
Alexander P. Serrano
Kevin T. Sharp
Heather Taff
Michael J. Tu

Shan Colletti
Asher Edes
Sarah E. Elliott
Kaori C. Ema
Laura T.S. Foote
Dhaval Garg
Matthew Aaron Getz
Mark D. Hoadley
James Holmes
Joyce A. Hwu
Tim Johnson
Benjamin A. Jorns
Vivasvat Kaul
Nicholas Kim
Charlie Kinzer
Chris Knowlton
Elaine C. Khoong
Sarah L. Lambert
Julie Lauffenburger
Jeanne Lee, M.D.
Brian A. Link
Joseph Liu
Heidi Lu
Katherine Mackenzie
Kathleen Theresa Malinowski
Sean Miller
Nicholas H. Moryl
Amanda Murphya
Sydney K. Null
Amy Leigh Orsborn
Jen Poulsen
Robert Quimby
Kavita L. Ramakrishnan
Caitlin Ramsey
Timothy Roderick
James Sanders
Urvi Shah
Phil Stanton
Lucas Sturnfield
Stephanie Sullivan
Christopher E. Szucko
Lucas H. Ting
Vaibhav Upadhyay
Erik Volkman
James Z. Wang
Angela M. Weis
Rebecca Williams
Richard Yao
Rick S. Yuan

Class of 2004

(15% participation)

Anonymous (2)
Amanda J. Adeleye
Steven P. Benario
Kora Bongen
Emily I. Coleman
David A. Crow
Kevin M. Flannery
Jacob Foster
Sarah E. Grothen
Heather M. Haines
Alisha G. Howell
Matthew M. Ito
Amanda H. Jablonsky
Gabriel William Jacobson
Ruozhou Jia
Garry James Kennebrew, Jr.
Amy Li
Nicholas S. Lilovich
Aubrey E. Lutz
Mikin Patel
Kyle B. Rader
Alexandra Sasha Rahlin
David H. Raileanu
Monica (Radosevich) Reynolds
Alexander P. Serrano
Kevin T. Sharp
Heather Taff
Michael J. Tu

Nisha Wadhvani
David S. Xu
Anita Xue
Dunping Yang

Class of 2005

(10% participation)

Anonymous (1)
Jawwad Akhtar
Brian Baker
Paras D. Bhayani
Jordan McNair Burdinie
Mary Frances Dorn
Robert Forler
Nicholas Harker
Charles Keaton
Andrew Joseph Keller
John Koval
Sharad S. Kumar
Jenna Maloka
Darshana Nair
Joseph Phan
David Qasem
Tania Sanchez
Margot Seigle
Laura Janine Sharpless
Katie Siemens
Mark Simmons
Ryan Woods
Ying (Amy) Ye

Class of 2006

(12% participation)

Anonymous (1)
Kavin Arasi
Chelsey Bayer
Jonathan A. Bragg
Kevin Chang
Mi (Amy) Chen
Jenny Cheng
Nathan Cheng
Xiangyu Ding
Matt Drake
Jamison A. Hill
John R. Holmstrom
David P. Loveland
Andrew Pipathsouk
Vishaka Raguveer
Michelle A. Rogers
Natasha D. Sansone
Rae Shih
Maximiliano Silvestre
Samantha E. Spalding
Jennifer LeClair Townsend
Emilie T. Yeh
Richard Zhang
Spencer Zhang

Class of 2007

(10% participation)

Samuel Berger
Jorrell R. Bonner
Matthew D. Carter
Stephanie H. Chang
Daniel M. Dean
Theresa L. Geiger
Claire L. Herdeman
Heather Anne Hoff
Ravi K. Kesari
Catherine Ko
Wei Luo
Eise A. Marifian
Sarah L. McPike
Luke S. Moryl
Ann Pan
Alexandra Plattos

(Continued on next page)

(Continued from previous page)

Class of 2007

Benjamin V. Rodrigues
Adam E. Tenhouse
Anil R. Wadhvani
Charles Whittaker
Theodore Yeh

Class of 2008

(8% participation)
William Cliff Boldridge
Liyun David Chang
Seong-Ah Marcella Cho
Yangbo Du
Karissa F. Fernandez
Eric Nels Hultgren
Jonathan Koch
Kyson Joseph Mathieu
Birce Onal
Sandeep Paruchuri
Sophia Pilipchuk
Jason Rock
Kyle Schirmann
Jacqueline Pearl Steffen
Angela Suh
Ryan Yuan Wang
Robert Michael Zedric
Jun Yue Zhang

Class of 2009

(3% participation)
Elizabeth Bartos
Vidya Govind-Thomas
Adam J. Leemans
Ariel Liu
Andrew William Nelson
Cari L. Peterson
Jenny Roderick
Anisha Vyas

Class of 2010

(8% participation)
Jake Edward Ayala
Evan Balzuweit
Stephanie Bernardo
Shelly S. Bhanot
Michael J. Gleeson
Alexandra Anne Hizel
Jessica Lynn Hunter
Anusha Kumar
Andrew Lee
Stephanie Martinez
Aldo M. Rossi
Isolina R. Rossi
Michelle Rudolph
Hannah E. Schmitt
Evan Schwerbrock
John Jian Wang
Elizabeth Jane Zaretsky

Class of 2011

(9% participation)
Ruchi Aggarwal
Lisa O. Akintilo
Cindy Angpraseuth
Katherine E. Arenas
Tasha Arvanitis
Wesley Tomson Bradley
Dane H. Christianson
Sharon E. Duval
William Robert Erwin
Justin L. Feng
Wesley Earl Herron
Corinne A. Madsen
Ian S. McInerney
Allison Morrow
Melissa O'Brien
Brian Page
Mehal Shah
Jack Shi
Gary Wang
Kenny Wang
Karna Warrior
Megan Wu

Class of 2012

(10% participation)
Michael Atten
Jennifer Bailey
Ajay Chatrath
Logan Damiani
Nathan Geldner
Miranda Herzog
Adam Kalinich
Emil Khabibouline
Samantha J. Levin
Sarah Lisk
Peter Lu
Nolan Maloney
Hannah Miller
Eric Ordonez
Deokgeun Park
Jorge Quero
Jeannine Schulz
Kyle Skoog
Hyun Jin Song
Sonam Vyas
Michael Connor White
Taylor Yost
Vivian Zhang

Alumni Volunteers

Mivil Abraham '08
Douglas Adams '99
Dr. Pooja Agarwal '01
Lisa Akintilo '11
Yusuf Aktan '12
Betsy Allen '06
Dr. Angel Alvarez '98
Jessica Anderson '01
Vidya Anjur '12
Christopher Aruffo '89
Tricia Aung '04
Dawna Bagherian '10
Melvin Berger '90
Amishi Bajaj '10
Brian Baker '05
P.J. Balin-Watkins '98
Jonathon Bekker '06
Jennifer Bennett '10
Rachel Benoit '92
Samuel Berger '07
Allison Bergin '08
Mitchell Bieniek '12
Wendy Bindeman '12
Derek Blanchette '03
Marilyn Blasingame '08
Joe Bonomo '91
Wesley Bradley '11
Dr. Jay Budzik '95
Ray Buhr '05
Caitlin Bunt '09
Jordan Burdine '05
Ernesto Cruz Caceres '97
Luis Carbajal '09
Matt Carter '07
Jennifer Cash '90
Sarah Caveglia '06
Reginald Champagne '02
Alicia Chan '03
Belinda Chang '01
Robert Chang '89
Angela Chen '93
Ann Chen '93
Irene Chen '10
Megan Chen '12
Christina Cheng '12
Jenny Cheng '06
Stephanie Cheng '11
Karen Chien '05
Nina Chinosorn '96
Lindsey Choi '08
Henry Chong '92
Francis Cocjin '12
Kevin Colby '95
Emily Coleman '04
Katia Colin '12
Caitlyn Collett '12
Melissa Comenduley '90
Rachel Cook '01
Charlie Corrigan '99
Eleanor Cory '12
Joshua Cote '08
Brittanie Crain '05
Catherine Crawford '09
Jennifer Crawford '12
Brian Cudiamat '96
Megan Czajka '12
Irene Czajkowski '99
Raymond Dames '89
Cynthia Nguyen Dang '03
Monica Daniels '12
Shelby Daniel-Wayman '12
Sophia Davenport '89
Sharon DeCaro '03

Jenny Deller '94
Lucas Delort '09
David Derry '10
Dr. Daniel DeUgarte '90
Dean Dieker '03
Alex Dietrich-Greene '97
Hilary Dietz '09
Marty DiMarzio '95
Diliana Dimitrova '11
Kristen Nykoel Dinardo '03
Yuanxia Ding '00
Marcelo Diop-Gonzalez '12
Quoc Do '90
Julie Dowling '99
Michael Driscoll '07
Alexander Drummond '09
Johnny Duan '12
Sena Dzakuma '08
Eric Engelhard '96
Eva Bach Engelhard '96
Andrew Ericson '10
Salvador Esparza '10
Tiernan Evans '08
Jenny Fang '09
Natasha Fast '98
Yan-Yang Feng '12
Sharon Sundry Ferrell '89
Roy Fisher '09
Michelle Fitzpatrick '01
Dan Frakes '89
Sarah Frey '92
Vanessa Gage '95
Cristal Garcia '07
Dhaval Garg '03
Theresa Geiger '07
Jill Gengler '89
Benjamin Gertzfield '97
Bonnie Min Gier '89
Marissa Ghant '08
Ricardo Gonzalez '09
Lani Gordon '97
Katrina Gossman '07
Vidya Govind-Thomas '09
Rhiana Gunn-Wright '07
Brinda Gupta '12
Saarthak Gupta '12
Trevor Hahm '12
Jing Han '06
Mandy Hayes '07
Dr. Cheryl Heinz '89
Lauraleigh Heffner '10
Gabriella Heller '10
Jacob Henry '12
Ovi Hentea '06
Tyce Herrman '08
Katrina Herrmann '01
Mark Hoadley '03
Dr. Andy Hocker '91
Mark Hoemmen '98
John Hoesley '89
Chelsy Hopper '92
Thomas Houlahan '05
Pete Howes '12
Dorcas Huang '12
Aleata Hubbard '02
Eric Hultgren '08
Jessica Hunter '10
Adnan Husain '98
Aiva Ilevins '06
Dr. Princess Imoukhuede '98
Lara India '07
Matthew Isoda '02
August Jackson '93

Shawon Jackson '11
Ethan Jacobs '12
John Jaeger '04
Ankit Jain '08
Shantanu Jain '12
Brittany James '09
Kumar Javvaji '97
Dr. Jane Jih '99
Irene Jing '12
Jeremy Johnson '08
Tremylla Johnson '00
David Jordan '07
Benjamin Jorns '03
Damie Juat '12
Amanda Kabak '92
Glen Kabumoto '95
Jason Kahn '03
Arielle Kanters '05
Aditya Karan '12
Nilesh Kavthekar '12
Dr. Sanza Kazadi '90
Dr. Garry Kennebrew '04
Ravi Kesari '07
Emil Khabibouline '12
Micha Kilburn '95
Mimi Kim '04
Joshua Kinder '05
Clinton Kinkade '07
Amy (Timm) Kinney '95
Jordan Koss '89
Jakob Kotas '05
Alekyia Kothamasu '12
Amanda Kotlyar '97
Rachel Kovac '05
Monica Kozbial '11
Alarmel Krishnaswamy '96
Melanie Kuehn '98
Sneha Kumar '03
Benjamin Kuo '12
Opeyemi Kusoro '09
Sam Kwak '11
Eric Kwan '10
Noelle Kwan '07
Jasmine Kwasa '09
Kristen Lail '91
Sonia Lal '93
Dan Langan '02
Gregory Larnell '00
Vivian Lau '03
Christy Lee '92
Adam Leemans '09
Dr. Apinya Lertratanakul '93
Melanie Leung '06
Stephanie Leung '06
Samantha Levin '12
James Li '00
Xiaoyu Li '12
Thomas Lightfoot-Vidal '12
Nicholas Lilovich '04
Santina Lin '10
Annie Liu '07
Ariel Liu '09
Jimmy Liu '09
Naomi Liu '11
Xuxuan Liu '09
David Lockhart '90
David Lorentzen '10
Zouyan Lu '02
Steven Lucy '02

For the list of
student donors
by class year,
please visit

<https://sites.imsa.edu/IMS360>

THANK YOU to the more than 400 alumni who generously shared their time and talents with IMSA during the 2012-2013 academic year.

These alumni volunteers, representing every class year, helped with technology projects, recruited prospective students, served as mentors for current students, shared legislative contacts, and participated in media interviews and special events. They led the IMSA Alumni Association, taught week-long Intersession courses, coordinated reunions and alumni gatherings, advised student clubs, worked with IMSA's Statewide Student Initiatives and more. These alumni also provided strategic counsel to the IMSA Board of Trustees, the IMSA Fund Board of Directors, administrative and program leaders, and Admissions Student Review Committee.

Weï Luo '07
Justine Ly '11
Alex Ma '08
Rahul Maheshwari '12
Egle Malinauskaitė '12
Kate Malinowski '03
Jenna Maloka '05
Zack Maril '10
Stephanie Martinez '20
Susan Massey '01
Brandan Matthews '10
Rhyston Mays '12
Angela McByrd '08
Ian McInerney '11
Sarah Mcpike '07
Allyson Milenkovic '12
Hannah Miller '12
Sreeram Mittapalli '97
Jennifer Mo '02
Denise Mol '11
Christina Momchev '12
Tiffany Morgan '00
Maciej Mroczek '05
Dan Mueth '90
Kirti Munjeti '13
Alexander Muñoz '10
Elizabeth Murphy '10
Amanda Murphyao '03
Sulochana Mutha '08
Ramez Naam '90
Laura Napierkowski '12
Vishesh Narayan '00
Lina Nayak '03
Ilya Nepomnyashchiy '09
Sammy Nguyen '09
Carly Nix '04
Jennifer Norton '92
Matt Norton '07
Anthony Nuval '98
Chibuzo Obasi '12
Melissa O'Brien '11
Paloma Ocola '12
Ranait O'Connor '09
Birce Onal '08
Carlo Ordóñez '02
Jason Orloff '90
Amy Orsborn '07
Kristen Osenga '90

Meaghan Pachay '09
Kori Pacyniak '00
Brian Page '11
Scott Page '09
Stephen Paige '00
Annie Park '02
Jeff Pasqualucci '00
Lisa Patel '10
Mikin Patel '04
Ernestina Perez '09
Gregary Pergrossi '12
Zachary Pergrossi '12
Robert Petersen '94
Dr. Amy Peterson '04
Lisa Peterson '08
Scott Pfister '89
Capt. Pearl Phaovisaid '99
Ravi Pilla '09
Martina Pillay '09
Anne Pipathsouk '09
Alexandra Plattos '07
Kathleen Plinske '97
Jacob Plummer '96
Dr. Arthur Pope '01
Amanda Potocky '93
Kristen Pratt '04
Dwan Prude '97
Aparna Puppala '99
Gina Qin '12
Faith Quist '11
Amanda Raddatz '01
Matthew Rasmussen '12
Abhinav Reddy '12
Morgan Rehberg '11
Anna Remis '97
Jorge Reyes '99
Meredith Rhein '08
Ashley Ro '11
Kaleigh Roberts '06
Clement Robinson '06
Douglas Robinson '02
Dr. Erin Roche '89
Jason Rock '08
Jenny Roderick '09
Aimee Rodriguez '99
Mariela Rodriguez '12
Madison Rogers '12
Rae Rokosh '09

Michelle Rudolph '10
Capt. Kenyatta Ruffin '99
Ellie Ryan '08
Satoe Sakuma '11
Sarah Salameh '12
Sid Sapru '10
Lindsey Schobert '09
Brian Sebyy '96
Polina Segalova '01
Rital Shah '10
Samir Shah '11
Rebecca Shane '02
Kimberly Sherwin '11
Bo Shi '08
Kevin Shi '11
Rae Shih '06
Alan Shramuk '12
Elisa Smith '96
Amy Sohl '89
Dr. Sarah Song '96
Stephanie Song '06
Amelia Sorensen (Adams) '98
Dr. Lynn Sosa-Bergeron '94
Leigh Spencer '98
Ray Stadt '93
Jessica Stephenson '97
Sarah Stevens '07
Carrie Steyer '89
Danielle Strickland '10
Katie Stromdahl '09
Molly Sturm '03
Lucas Sturnfield '03
Michael Suh '97
Michelle Suh '12
Stephanie Sullivan '03
Daniel Sun '03
Alex Surasky-Ysasi '03
Hannah Swerbenski '13
Dr. Meghan Tadel '95
Heather Taff '04
Ana Tellez '02
Cristina Thomas '07
Lacey Thomas '08
Amber Thompson '03
Courtney Thompson '03
Aaditya Tolappa '12
Connor Tomasko '11
Amanda Townsend '04

Melanie (Kotys) Traugber '95
Joseph Turek '90
Milan Udawatta '09
Thiran Udawatta '08
Viyan Udawatta '05
Matt Unterman '93
David Vakil '92
Sydney Valero '12
Karthik Vantakala '09
Seema Verma '04
Veena Villivalam '98
David Wagner '93
Kelly Wallin '11
Christopher Wallis '11
Tabbey Walquist '09
Lyn Miller Wancet '99
Dr. Claire Wang '93
Connie Wang '12
John Wang '10
Kevin Wang '12
Jessica Ward '02
Winn Wasson '01
Shannon Watson '92
Charles Whittaker '09
Jered Wierzbicki '02
Akilah Wilkes '95
Jordan Williams '12
Dr. Tuwanda Williamson '91
Jonathan Wilson '96
Keith Winstein '99
Michael Wong '11
Mark Wrzyszczyński '92
Megan Wu '11
Lisa Xia '03
Diana Xu '12
Mark Xue '09
Sam Yagan '95
Michael Yamakawa '10
Kevin Yang '02
Karthik Yarlagaadda '12
Fei Ye '09
Kelly Yom '12
Vanya Yorgova '12
Stanley Yuan '12
Elizabeth Zaretsky '10
Jody Zarrell '98
Sharon Zeng '08
Joanna Zhang '05
Alice Zhao '04
Amy Zhou '10
Abigail Zillner '06
Elaina Zinti '12

THANK YOU!



Illinois Mathematics and Science Academy®
 1500 Sullivan Road
 Aurora, Illinois 60506-1000

Although we strive for accuracy, if you see an error in your mailing label, please call the Office of Marketing and Communications at 630-907-5033.

SAVE THE DATE

for the Following IMSA Events!

- **Intersession** **January 6-10, 2014**
- **IMSAloquium** **April 17, 2014**
- **Alumni Weekend** **July 18-29, 2014**
 Includes reunions for the Classes of 1994, 1999, 2004, and 2009. To join a reunion planning committee, contact myimsa@imsa.edu. For information on IAA events, visit www.imsaalumni.org.

360 goes green

Help the IMSA360 magazine go green! If we have your current e-mail address, you will now receive a full color version to view online. If you'd still like IMSA360 mailed to you in print form, or need to update your contact information, please visit www.imsaalumni.org/360.




Illinois Mathematics and Science Academy®
 1500 Sullivan Road
 Aurora, Illinois 60506-1000
 630-907-5000
www.imsa.edu

For more content and important updates, find us online.

<https://sites.imsa.edu/imsa360>

IMSA360: Recipient of the National School Public Relations Association Award of Excellence, the Illinois School Public Relations Association Award of Excellence, the American Graphic Design Award and the Hermes Creative Award.