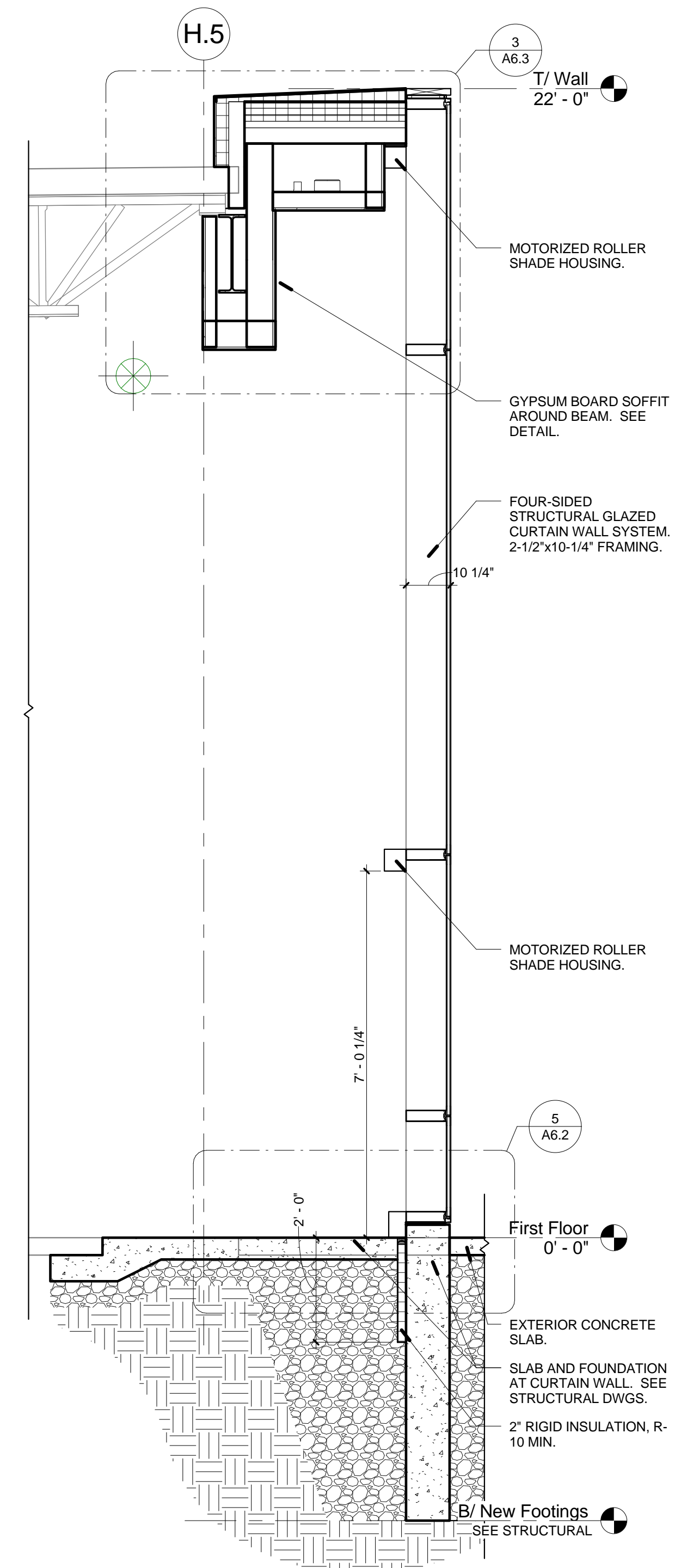
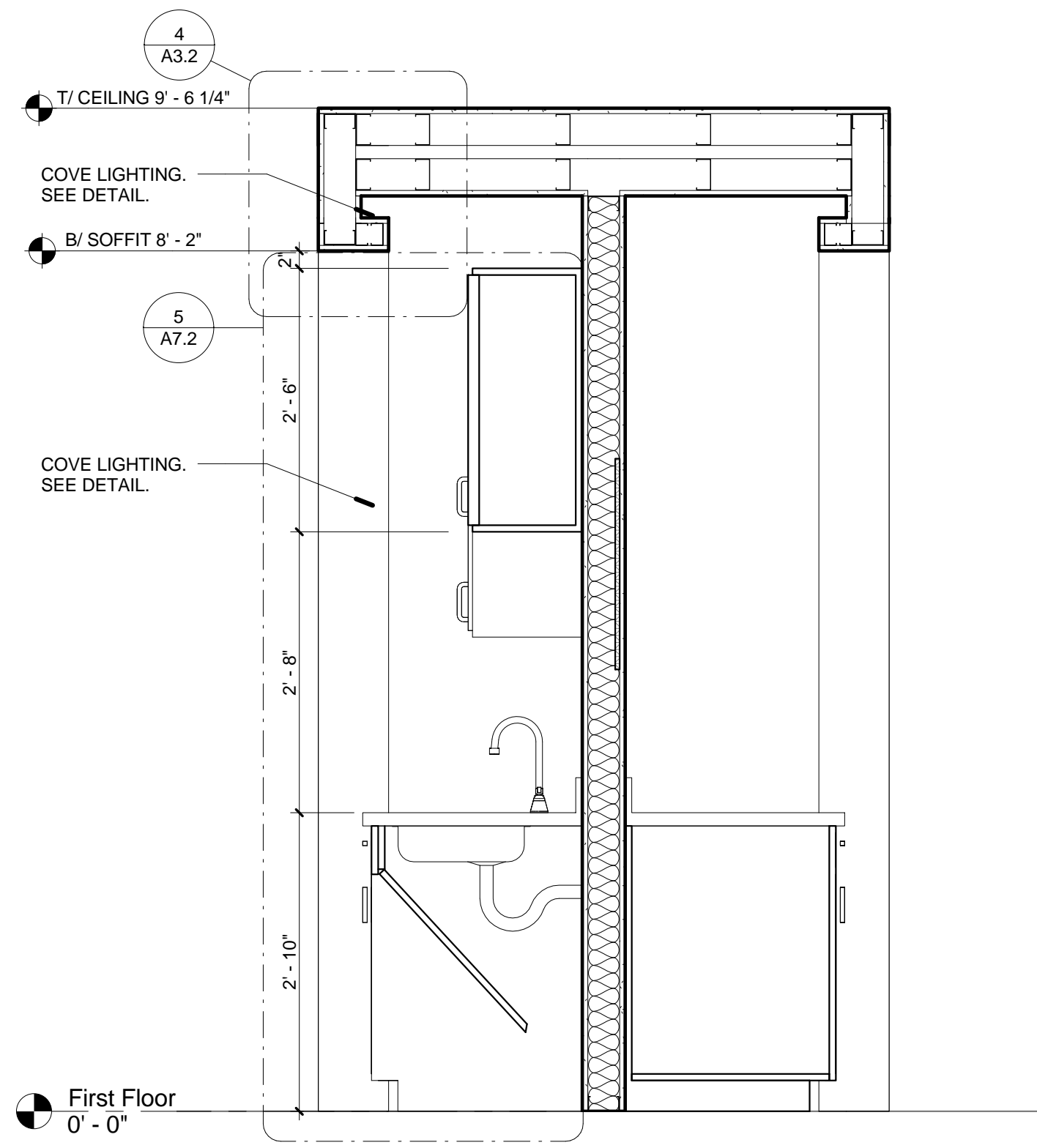


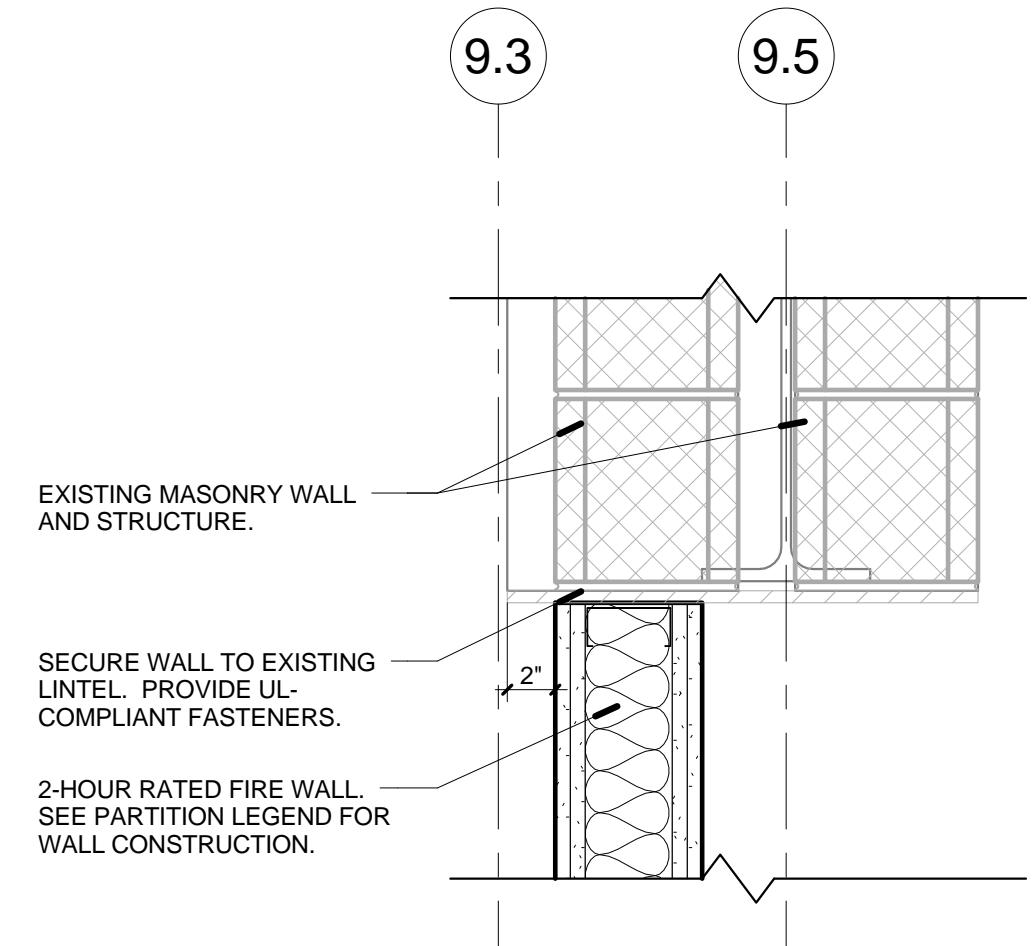
1 PARTIAL BUILDING SECTION - NORTH/SOUTH  
1/4" = 1'-0"



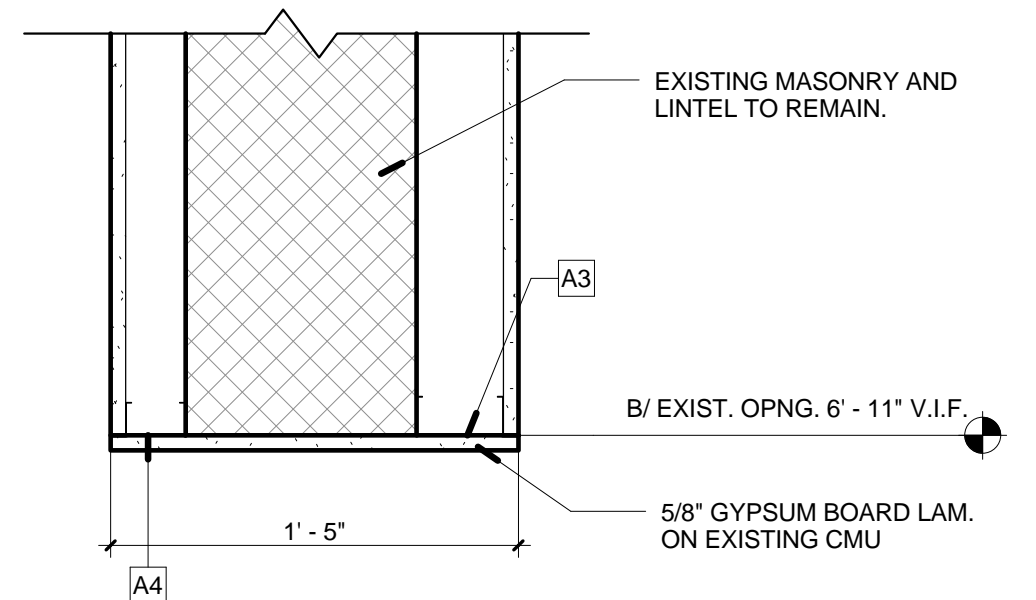
6 WALL SECTION @ NEW CURTAIN WALL  
1/2" = 1'-0"



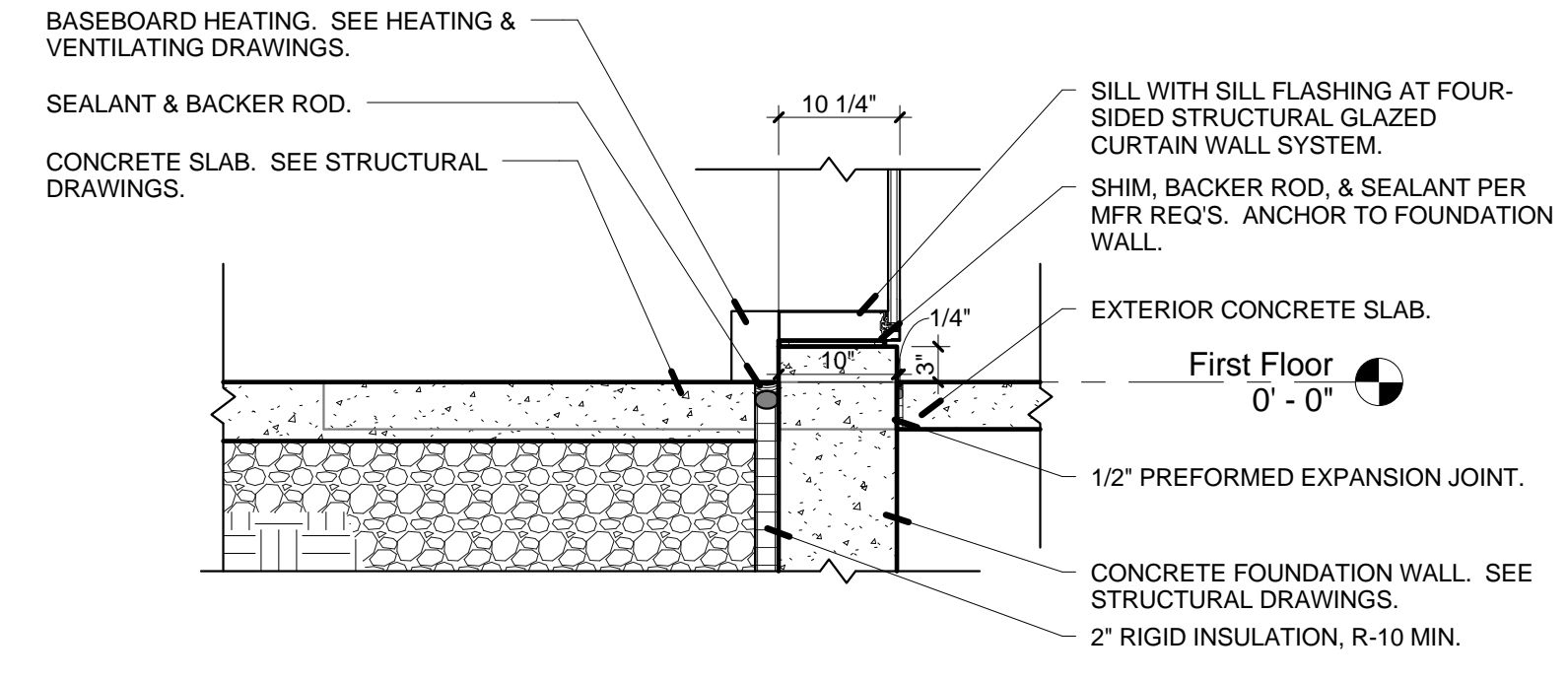
2 SECTION @ FLEX SPACE 1 ISLAND  
3/4" = 1'-0"



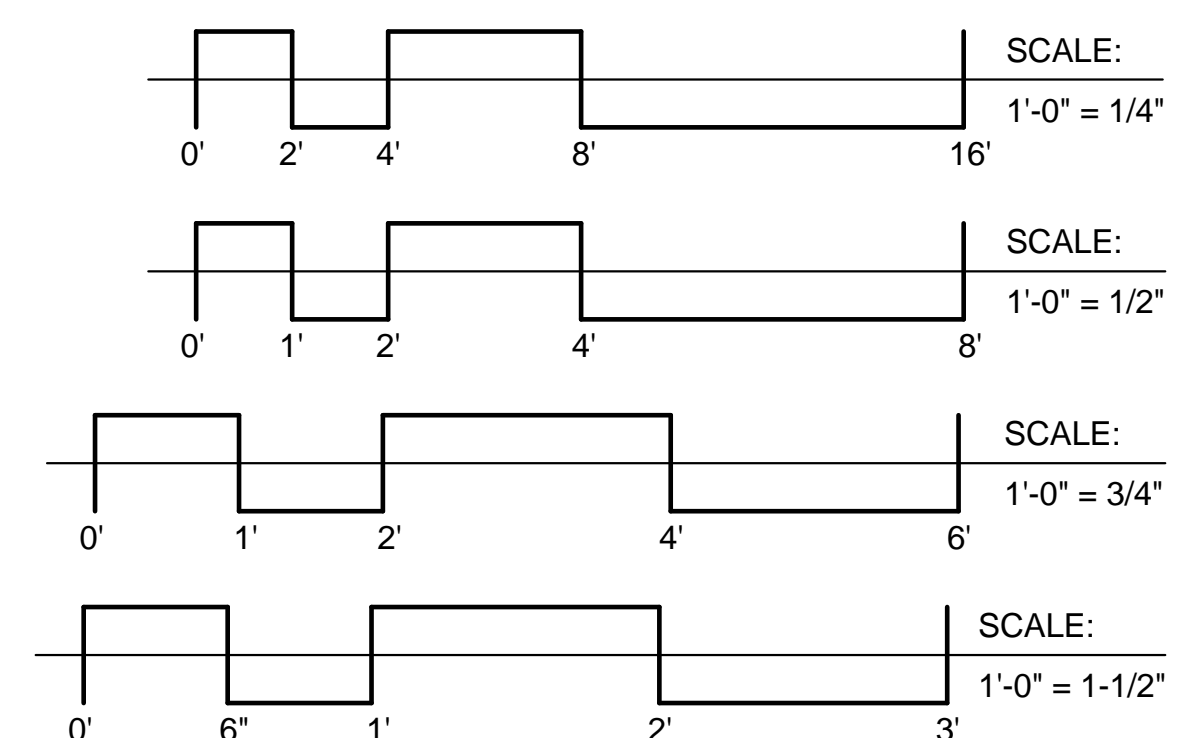
3 DETAIL @ CORRIDOR WALL  
1 1/2" = 1'-0"



4 HEAD DETAIL @ EXISTING CMU WALL  
1 1/2" = 1'-0"



5 DETAIL @ CURTAIN WALL SILL  
3/4" = 1'-0"



NOTE: CONTRACTOR SHALL OBTAIN AND VERIFY ALL DIMENSIONS AND CONDITIONS AT JOB SITE AND BE FULLY RESPONSIBLE FOR SAME.

REVISIONS		
NO.	DATE	REMARKS

CCA PROJ. #:	14357	PREPARED	
DRAWN	SSB / MT	APPROVED	
CHECKED	BC	APPROVED	

• CORDOGAN, CLARK & ASSOCIATES, INC. •  
: ARCHITECTS • ENGINEERS :  
www.cordoganclark.com

Aurora 960 Ridgeway Avenue  
Chicago, Illinois 60506  
Tel 630.996.4678  
Fax 630.896.4867

Chicago 716 North Wells Street  
Chicago, Illinois 60610  
Tel 312.943.7300  
Fax 312.943.4771



State of Illinois  
Bruce Rauner, Governor  
Illinois Capital Development Board

101% DESIGN SUBMITTAL  
BUILDING SECTIONS  
CONSTRUCT INNOVATION CENTER - ACADEMIC BUILDING  
ILLINOIS MATH & SCIENCE ACADEMY  
1500 SULLIVAN ROAD  
AURORA, IL 60506  
BUILDING #CP 078

CDB PROJECT NO.  
805-030-019  
DATE  
6/2/2015  
SHEET NO.  
**A6.2**

6/3/2015 2:44:54 PM